

Cytokeratin 13 Antibody

Rabbit mAb

Catalog # AP90745

Product Information

Application	WB, IHC, IF, ICC, IHF
Primary Accession	P13646
Reactivity	Human, Mouse
Clonality	Monoclonal
Other Names	Keratin, type I cytoskeletal 13; Krt1-13; Cytokeratin 13; CK13; Keratin 13; KRT13; WSN2;
Isotype	Rabbit IgG
Host	Rabbit
Calculated MW	49588

Additional Information

Dilution	WB 1:50000~1:100000 IHC 1:50~1:200 ICC/IF 1:50~1:200
Purification	Affinity-chromatography
Immunogen	A synthesized peptide derived from human Cytokeratin 13
Description	Cytokeratin 13 is a member of the keratin gene family.
Storage Condition and Buffer	Rabbit IgG in phosphate buffered saline , pH 7.4, 150mM NaCl, 0.02% sodium azide and 50% glycerol. Store at +4°C short term. Store at -20°C long term. Avoid freeze / thaw cycle.

Protein Information

Name	KRT13
Function	Type 1 keratin (Probable). Maintains postnatal tongue mucosal cell homeostasis and tissue organization in response to mechanical stress, potentially via regulation of the G1/S phase cyclins CCNE1 and CCNE2 (By similarity).
Tissue Location	Expressed in some epidermal sweat gland ducts (at protein level) and in exocervix, esophagus and placenta

Images

Western blot analysis of Cytokeratin 13 expression in A431 cell lysate.

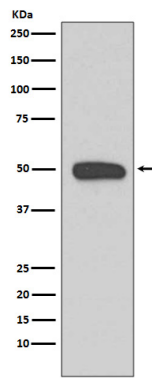


Image not found : 202311/AP90745-IHC.jpg

Immunohistochemical analysis of paraffin-embedded human tonsil, using Cytokeratin 13 Antibody.

Please note: All products are 'FOR RESEARCH USE ONLY. NOT FOR USE IN DIAGNOSTIC OR THERAPEUTIC PROCEDURES'.