

# pro Caspase 10 Antibody

Rabbit mAb

Catalog # AP90748

## Product Information

<b>Application</b>	WB, IHC, IF, FC, ICC, IP, IHF
<b>Primary Accession</b>	<a href="#">Q92851</a>
<b>Reactivity</b>	Human, Mouse
<b>Clonality</b>	Monoclonal
<b>Other Names</b>	Apoptotic protease Mch4; CASP10; Caspase 10; FLICE2; ICE like apoptotic protease 4; FADD-like ICE2;
<b>Isotype</b>	Rabbit IgG
<b>Host</b>	Rabbit
<b>Calculated MW</b>	58951

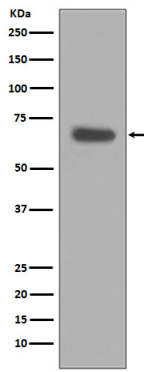
## Additional Information

<b>Dilution</b>	WB 1:500~1:1000 IHC 1:50~1:200 ICC/IF 1:50~1:200 IP 1:10 FC 1:50
<b>Purification</b>	Affinity-chromatography
<b>Immunogen</b>	A synthesized peptide derived from human pro Caspase 10
<b>Description</b>	Caspases are a family of cytosolic aspartate specific cysteine proteases. Involved in the activation cascade of caspases responsible for apoptosis execution. Cleaved Caspase 10 leads to the processing of Caspase 3 and Caspase 7, initiating a caspase cascade and subsequent apoptosis.
<b>Storage Condition and Buffer</b>	Rabbit IgG in phosphate buffered saline , pH 7.4, 150mM NaCl, 0.02% sodium azide and 50% glycerol. Store at +4°C short term. Store at -20°C long term. Avoid freeze / thaw cycle.

## Protein Information

<b>Name</b>	CASP10
<b>Synonyms</b>	MCH4
<b>Function</b>	Involved in the activation cascade of caspases responsible for apoptosis execution. Recruited to both Fas- and TNFR-1 receptors in a FADD dependent manner. May participate in the granzyme B apoptotic pathways. Cleaves and activates effector caspases CASP3, CASP4, CASP6, CASP7, CASP8 and CASP9. Hydrolyzes the small- molecule substrates, Tyr- Val-Ala-Asp- -AMC and Asp-Glu-Val-Asp- -AMC.
<b>Tissue Location</b>	Detectable in most tissues. Lowest expression is seen in brain, kidney, prostate, testis and colon

## Images



Western blot analysis of pro Caspase 10 expression in HeLa cell lysate.

Image not found : 202311/AP90748-IF.jpg

Immunofluorescent analysis of MCF-7 cells, using pro Caspase 10 Antibody.

Please note: All products are 'FOR RESEARCH USE ONLY. NOT FOR USE IN DIAGNOSTIC OR THERAPEUTIC PROCEDURES'.