

# Cytokeratin 18 Antibody

Rabbit mAb

Catalog # AP90758

## Product Information

<b>Application</b>	WB, IHC, IF, FC, ICC, IHF
<b>Primary Accession</b>	<a href="#">P05783</a>
<b>Reactivity</b>	Rat, Human, Mouse
<b>Clonality</b>	Monoclonal
<b>Other Names</b>	type I cytoskeletal 18; Cell proliferation-inducing gene 46 protein; Cytokeratin-18; Keratin-18; KRT18; CYK18; PIG46; KRT 18; CK18; Keratin 18;
<b>Isotype</b>	Rabbit IgG
<b>Host</b>	Rabbit
<b>Calculated MW</b>	48058

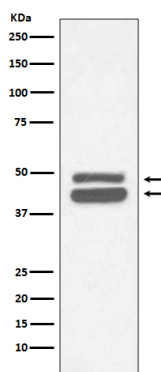
## Additional Information

<b>Dilution</b>	WB 1:500~1:2000 IHC 1:100~1:500 ICC/IF 1:50~1:200 FC 1:60
<b>Purification</b>	Affinity-chromatography
<b>Immunogen</b>	A synthesized peptide derived from human Cytokeratin 18
<b>Description</b>	Involved in the uptake of thrombin-antithrombin complexes by hepatic cells (By similarity). Together with KRT8, is involved in interleukin-6 (IL-6)-mediated barrier protection.
<b>Storage Condition and Buffer</b>	Rabbit IgG in phosphate buffered saline , pH 7.4, 150mM NaCl, 0.02% sodium azide and 50% glycerol. Store at +4°C short term. Store at -20°C long term. Avoid freeze / thaw cycle.

## Protein Information

<b>Name</b>	KRT18
<b>Synonyms</b>	CYK18
<b>Function</b>	Involved in the uptake of thrombin-antithrombin complexes by hepatic cells (By similarity). When phosphorylated, plays a role in filament reorganization. Involved in the delivery of mutated CFTR to the plasma membrane. Together with KRT8, is involved in interleukin-6 (IL-6)-mediated barrier protection.
<b>Cellular Location</b>	Nucleus matrix {ECO:0000250 UniProtKB:Q5BJY9}. Cytoplasm, perinuclear region. Nucleus, nucleolus. Cytoplasm {ECO:0000250 UniProtKB:Q5BJY9}
<b>Tissue Location</b>	Expressed in colon, placenta, liver and very weakly in exocervix. Increased expression observed in lymph nodes of breast carcinoma.

## Images



Western blot analysis of Cytokeratin 18 expression in HeLa cell lysate.

Image not found : 202311/AP90758-IHC.jpg

Immunohistochemical analysis of paraffin-embedded mouse liver, using Cytokeratin 18 Antibody.

Image not found : 202311/AP90758-IF.jpg

Immunofluorescent analysis of pc-12 cells, using Cytokeratin 18 Antibody.

Please note: All products are 'FOR RESEARCH USE ONLY. NOT FOR USE IN DIAGNOSTIC OR THERAPEUTIC PROCEDURES'.