

# EpCAM Antibody

Rabbit mAb

Catalog # AP90759

## Product Information

---

<b>Application</b>	WB, IHC
<b>Primary Accession</b>	<a href="#">P16422</a>
<b>Reactivity</b>	Human
<b>Clonality</b>	Monoclonal
<b>Other Names</b>	Epithelial cell adhesion molecule; Ep-CAM; CO17A; CD326; Cell surface glycoprotein Trop-1; EGP; Epithelial glycoprotein 314; EGP314; hEGP314; KS 1/4 antigen; KSA;
<b>Isotype</b>	Rabbit IgG
<b>Host</b>	Rabbit
<b>Calculated MW</b>	34932

## Additional Information

---

<b>Dilution</b>	WB 1:1000~1:2000 IHC 1:50~1:200
<b>Purification</b>	Affinity-chromatography
<b>Immunogen</b>	A synthesized peptide derived from human EpCAM
<b>Description</b>	Epithelial cell adhesion and activating molecule (EpCAM/CD326) is a transmembrane glycoprotein that mediates Ca <sup>2+</sup> independent, homophilic adhesions on the basolateral surface of most epithelial cells. The antigen is being used as a target for immunotherapy treatment of human carcinomas.
<b>Storage Condition and Buffer</b>	Rabbit IgG in phosphate buffered saline , pH 7.4, 150mM NaCl, 0.02% sodium azide and 50% glycerol. Store at +4°C short term. Store at -20°C long term. Avoid freeze / thaw cycle.

## Protein Information

---

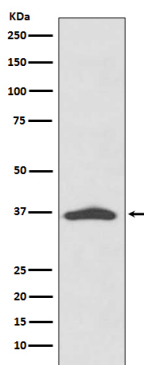
<b>Name</b>	EPCAM
<b>Synonyms</b>	GA733-2, M1S2, M4S1, MIC18, TACSTD1, TRO
<b>Function</b>	May act as a physical homophilic interaction molecule between intestinal epithelial cells (IECs) and intraepithelial lymphocytes (IELs) at the mucosal epithelium for providing immunological barrier as a first line of defense against mucosal infection. Plays a role in embryonic stem cells proliferation and differentiation. Up-regulates the expression of FABP5, MYC and cyclins A and E.
<b>Cellular Location</b>	Lateral cell membrane; Single-pass type I membrane protein. Cell junction, tight junction. Note=Colocalizes with CLDN7 at the lateral cell membrane and tight junction

## Tissue Location

Highly and selectively expressed by undifferentiated rather than differentiated embryonic stem cells (ESC) Levels rapidly diminish as soon as ESC's differentiate (at protein levels). Expressed in almost all epithelial cell membranes but not on mesodermal or neural cell membranes. Found on the surface of adenocarcinoma.

## Images

---



Western blot analysis of EpCAM expression in A431 cell lysate.

Image not found : 202311/AP90759-IHC.jpg

Immunohistochemical analysis of paraffin-embedded human stomach carcinoma, using EpCAM Antibody.

Please note: All products are 'FOR RESEARCH USE ONLY. NOT FOR USE IN DIAGNOSTIC OR THERAPEUTIC PROCEDURES'.