

Cytokeratin 1 Antibody

Rabbit mAb

Catalog # AP90760

Product Information

Application	WB, IHC
Primary Accession	P04264
Reactivity	Rat, Human, Mouse
Clonality	Monoclonal
Other Names	67 kDa cytokeratin; CK1; EHK; Epidermolytic hyperkeratosis 1; EPPK; Hair alpha protein; K1; Keratin; KRT 1; KRT1A; NEPPK; type II cytoskeletal 1; Type-II keratin Kb1;
Isotype	Rabbit IgG
Host	Rabbit
Calculated MW	66039

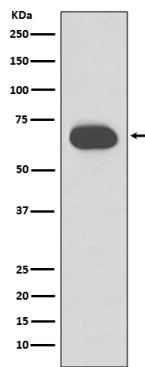
Additional Information

Dilution	WB 1:5000~1:20000 IHC 1:50~1:200
Purification	Affinity-chromatography
Immunogen	A synthesized peptide derived from human Cytokeratin 1
Description	May regulate the activity of kinases such as PKC and SRC via binding to integrin beta-1 (ITB1) and the receptor of activated protein C kinase 1 (RACK1).
Storage Condition and Buffer	Rabbit IgG in phosphate buffered saline , pH 7.4, 150mM NaCl, 0.02% sodium azide and 50% glycerol. Store at +4°C short term. Store at -20°C long term. Avoid freeze / thaw cycle.

Protein Information

Name	KRT1
Synonyms	KRTA
Function	May regulate the activity of kinases such as PKC and SRC via binding to integrin beta-1 (ITB1) and the receptor of activated protein C kinase 1 (RACK1). In complex with C1QBP is a high affinity receptor for kininogen-1/HMWK.
Cellular Location	Cell membrane. Cytoplasm
Tissue Location	The source of this protein is neonatal foreskin. The 67-kDa type II keratins are expressed in terminally differentiating epidermis

Images



Western blot analysis of Cytokeratin 1 expression in Human skin lysate.

Image not found : 202311/AP90760-IHC.jpg

Immunohistochemical analysis of paraffin-embedded rat skin, using Cytokeratin 1 Antibody.

Please note: All products are 'FOR RESEARCH USE ONLY. NOT FOR USE IN DIAGNOSTIC OR THERAPEUTIC PROCEDURES'.