

SHP2 Antibody

Rabbit mAb

Catalog # AP90764

Product Information

Application	WB, IHC, IF, ICC, IP, IHF
Primary Accession	Q06124
Reactivity	Human
Clonality	Monoclonal
Other Names	Tyrosine-protein phosphatase non-receptor type 11; Protein-tyrosine phosphatase 1D; SH-PTP2; PTP2C; PTP-1D; Protein-tyrosine phosphatase 2C; PTP-2C; SHP-2; Shp2; SH-PTP3; PTPN11; SHPTP2;
Isotype	Rabbit IgG
Host	Rabbit
Calculated MW	68011

Additional Information

Dilution	WB 1:1000~1:2000 IHC 1:50~1:200 ICC/IF 1:50~1:200 IP 1:50
Purification	Affinity-chromatography
Immunogen	A synthesized peptide derived from human SHP2
Description	Belongs to the protein-tyrosine phosphatase family. Non-receptor class 2 subfamily. It participates in signaling events downstream of receptors for growth factors, cytokines, hormones, antigens, and extracellular matrices in the control of cell growth, differentiation, migration, and death.
Storage Condition and Buffer	Rabbit IgG in phosphate buffered saline , pH 7.4, 150mM NaCl, 0.02% sodium azide and 50% glycerol. Store at +4°C short term. Store at -20°C long term. Avoid freeze / thaw cycle.

Protein Information

Name	PTPN11
Synonyms	PTP2C, SHPTP2
Function	Acts downstream of various receptor and cytoplasmic protein tyrosine kinases to participate in the signal transduction from the cell surface to the nucleus (PubMed: 10655584 , PubMed: 14739280 , PubMed: 18559669 , PubMed: 18829466 , PubMed: 26742426 , PubMed: 28074573). Positively regulates MAPK signal transduction pathway (PubMed: 28074573). Dephosphorylates GAB1, ARHGAP35 and EGFR (PubMed: 28074573). Dephosphorylates ROCK2 at 'Tyr-722' resulting in stimulation of its RhoA binding activity (PubMed: 18559669). Dephosphorylates CDC73 (PubMed: 26742426). Dephosphorylates SOX9 on tyrosine residues, leading to inactivate SOX9 and promote ossification (By similarity). Dephosphorylates tyrosine-phosphorylated NEDD9/CAS-L (PubMed: 19275884).

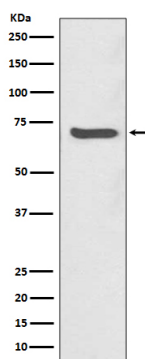
Cellular Location

Cytoplasm. Nucleus

Tissue Location

Widely expressed, with highest levels in heart, brain, and skeletal muscle.

Images



Western blot analysis of SHP2 expression in Jurkat cell lysate.

Image not found : 202311/AP90764-IHC.jpg

Immunohistochemical analysis of paraffin-embedded human heart, using SHP2 Antibody.

Please note: All products are 'FOR RESEARCH USE ONLY. NOT FOR USE IN DIAGNOSTIC OR THERAPEUTIC PROCEDURES'.