

PSA/KLK3 Antibody

Rabbit mAb

Catalog # AP90776

Product Information

Application	WB, IHC
Primary Accession	P07288
Reactivity	Human
Clonality	Monoclonal
Other Names	Prostate-specific antigen; PSA; Gamma-seminoprotein; Semin; Kallikrein-3; P-30 antigen; Semenogelase; KLK3; APS;
Isotype	Rabbit IgG
Host	Rabbit
Calculated MW	28741

Additional Information

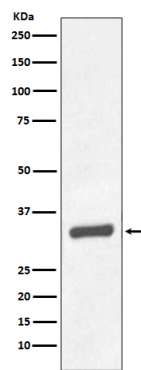
Dilution	WB 1:500~1:2000 IHC 1:50~1:200
Purification	Affinity-chromatography
Immunogen	A synthesized peptide derived from human PSA/KLK3
Description	PSA/KLK3 is a member of the glandular kallikrein subfamily of serine proteases. Upon cleavage of 7 amino-terminal amino acids, it is activated to liquefy semen in the seminal coagulum. Although PSA/KLK3 is produced in healthy individuals, investigators have found abnormally high levels in the blood of men with advanced prostate cancer.
Storage Condition and Buffer	Rabbit IgG in phosphate buffered saline , pH 7.4, 150mM NaCl, 0.02% sodium azide and 50% glycerol. Store at +4°C short term. Store at -20°C long term. Avoid freeze / thaw cycle.

Protein Information

Name	KLK3
Synonyms	APS
Function	Hydrolyzes semenogelin-1 thus leading to the liquefaction of the seminal coagulum.
Cellular Location	Secreted.

Images

Western blot analysis of PSA/KLK3 expression in Human prostate carcinoma tissue lysate.



Please note: All products are 'FOR RESEARCH USE ONLY. NOT FOR USE IN DIAGNOSTIC OR THERAPEUTIC PROCEDURES'.