

# MMP11 Antibody

Rabbit mAb

Catalog # AP90779

## Product Information

<b>Application</b>	WB, IHC, IF, ICC, IHF
<b>Primary Accession</b>	<a href="#">P24347</a>
<b>Reactivity</b>	Rat, Human, Mouse
<b>Clonality</b>	Monoclonal
<b>Other Names</b>	Matrix Metalloproteinase 11; MMP-11; SL-3; SL3; ST3; STMY3; Stromelysin 3; Stromelysin III;
<b>Isotype</b>	Rabbit IgG
<b>Host</b>	Rabbit
<b>Calculated MW</b>	54590

## Additional Information

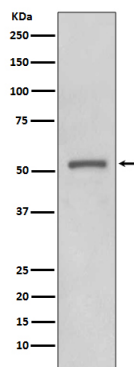
<b>Dilution</b>	WB 1:500~1:1000 IHC 1:50~1:200 ICC/IF 1:50~1:200
<b>Purification</b>	Affinity-chromatography
<b>Immunogen</b>	A synthesized peptide derived from human MMP11
<b>Description</b>	The matrix metalloproteinases (MMP) are a family of peptidase enzymes responsible for the degradation of extracellular matrix components, including collagen, gelatin, fibronectin, laminin and proteoglycan. May play an important role in the progression of epithelial malignancies.
<b>Storage Condition and Buffer</b>	Rabbit IgG in phosphate buffered saline , pH 7.4, 150mM NaCl, 0.02% sodium azide and 50% glycerol. Store at +4°C short term. Store at -20°C long term. Avoid freeze / thaw cycle.

## Protein Information

<b>Name</b>	MMP11
<b>Synonyms</b>	STMY3
<b>Function</b>	May play an important role in the progression of epithelial malignancies.
<b>Cellular Location</b>	Secreted, extracellular space, extracellular matrix
<b>Tissue Location</b>	Specifically expressed in stromal cells of breast carcinomas

## Images

Western blot analysis of MMP11 expression in MCF-7 cell lysate.



Please note: All products are 'FOR RESEARCH USE ONLY. NOT FOR USE IN DIAGNOSTIC OR THERAPEUTIC PROCEDURES'.