

Integrin alpha 2 Antibody

Rabbit mAb

Catalog # AP90785

Product Information

Application	WB, IHC, IF, FC, ICC, IP, IHF
Primary Accession	P17301
Reactivity	Rat, Human, Mouse
Clonality	Monoclonal
Other Names	BR; CD 49b; CD49 antigen like family member B; Collagen receptor; GPIa; HPA5; ITGA2; Platelet glycoprotein GPIa; VLA 2 alpha chain;
Isotype	Rabbit IgG
Host	Rabbit
Calculated MW	129296

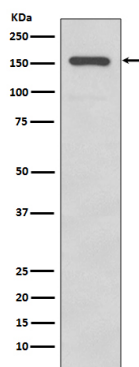
Additional Information

Dilution	WB 1:1000~1:2000 IHC 1:50~1:200 ICC/IF 1:50~1:200 IP 1:100 FC 1:100
Purification	Affinity-chromatography
Immunogen	A synthesized peptide derived from human Integrin alpha 2
Description	Integrin alpha-2/beta-1 is a receptor for laminin, collagen, collagen C-propeptides, fibronectin and E-cadherin. It recognizes the proline-hydroxylated sequence G-F-P-G-E-R in collagen. It is responsible for adhesion of platelets and other cells to collagens, modulation of collagen and collagenase gene expression, force generation and organization of newly synthesized extracellular matrix.
Storage Condition and Buffer	Rabbit IgG in phosphate buffered saline , pH 7.4, 150mM NaCl, 0.02% sodium azide and 50% glycerol. Store at +4°C short term. Store at -20°C long term. Avoid freeze / thaw cycle.

Protein Information

Name	ITGA2
Synonyms	CD49B
Function	Integrin alpha-2/beta-1 is a receptor for laminin, collagen, collagen C-propeptides, fibronectin and E-cadherin. It recognizes the proline-hydroxylated sequence G-F-P-G-E-R in collagen. It is responsible for adhesion of platelets and other cells to collagens, modulation of collagen and collagenase gene expression, force generation and organization of newly synthesized extracellular matrix. (Microbial infection) Integrin ITGA2:ITGB1 acts as a receptor for Human echoviruses 1 and 8.
Cellular Location	Membrane; Single-pass type I membrane protein.

Images



Western blot analysis of Integrin alpha 2 expression in A431 cell lysate.

Please note: All products are 'FOR RESEARCH USE ONLY. NOT FOR USE IN DIAGNOSTIC OR THERAPEUTIC PROCEDURES'.