

CD10 Antibody

Rabbit mAb

Catalog # AP90791

Product Information

Application	WB, FC
Primary Accession	P08473
Reactivity	Rat, Human, Mouse
Clonality	Monoclonal
Other Names	Atriopeptidase; CALLA; CD10; CD10 antigen; Enkephalinase; EPN; Membrane metallo endopeptidase (neutral endopeptidase, enkephalinase, CALLA, CD10); CALLA CD10; NEP; Nephilysin; Neutral endopeptidase;
Isotype	Rabbit IgG
Host	Rabbit
Calculated MW	100 KDa

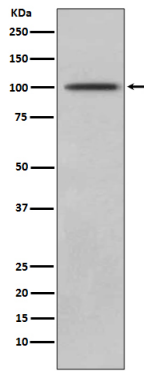
Additional Information

Dilution	WB 1:1000~1:2000 FC 1:50
Purification	Affinity-chromatography
Immunogen	A synthesized peptide derived from human CD10
Description	CD10 is a transmembrane type II molecule and functions as a metallo-peptidase requiring zinc. Specifically, CD10 cleaves 1-3 amino-terminal amino acids from peptides with a preference for neutral amino acids (valine, iso-leucine, phenylalanine, leucine or alanine). Involved in the degradation of atrial natriuretic factor (ANF). Displays UV-inducible elastase activity toward skin preelastic and elastic fibers.
Storage Condition and Buffer	Rabbit IgG in phosphate buffered saline , pH 7.4, 150mM NaCl, 0.02% sodium azide and 50% glycerol. Store at +4°C short term. Store at -20°C long term. Avoid freeze / thaw cycle.

Protein Information

Images

Western blot analysis of CD10 expression in Jurkat lysate.



Please note: All products are 'FOR RESEARCH USE ONLY. NOT FOR USE IN DIAGNOSTIC OR THERAPEUTIC PROCEDURES'.