

# S100A4 Antibody

Rabbit mAb

Catalog # AP90800

## Product Information

---

<b>Application</b>	WB, IHC, IF, FC, ICC, IP, IHF
<b>Primary Accession</b>	<a href="#">P26447</a>
<b>Reactivity</b>	Rat, Human, Mouse
<b>Clonality</b>	Monoclonal
<b>Other Names</b>	18A2; 42A; calcium Placental protein; Calcium protein; Calvasculin; CAPL; Fibroblast specific protein 1; FSP1; Metastasin; MTS1; S100 calcium binding protein A4;
<b>Isotype</b>	Rabbit IgG
<b>Host</b>	Rabbit
<b>Calculated MW</b>	11729

## Additional Information

---

<b>Dilution</b>	WB 1:500~1:1000 IHC 1:100~1:500 ICC/IF 1:50~1:200 IP 1:40 FC 1:100
<b>Purification</b>	Affinity-chromatography
<b>Immunogen</b>	A synthesized peptide derived from human S100A4
<b>Description</b>	The protein encoded by this gene is a member of the S100 family of proteins containing 2 EF-hand calcium-binding motifs. This protein may function in motility, invasion, and tubulin polymerization. Chromosomal rearrangements and altered expression of this gene have been implicated in tumor metastasis.
<b>Storage Condition and Buffer</b>	Rabbit IgG in phosphate buffered saline , pH 7.4, 150mM NaCl, 0.02% sodium azide and 50% glycerol. Store at +4°C short term. Store at -20°C long term. Avoid freeze / thaw cycle.

## Protein Information

---

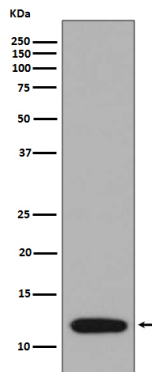
<b>Name</b>	S100A4
<b>Synonyms</b>	CAPL, MTS1
<b>Function</b>	Calcium-binding protein that plays a role in various cellular processes including motility, angiogenesis, cell differentiation, apoptosis, and autophagy (PubMed: <a href="#">16707441</a> , PubMed: <a href="#">23752197</a> , PubMed: <a href="#">30713770</a> ). Increases cell motility and invasiveness by interacting with non-muscle myosin heavy chain (NMMHC) IIA/MYH9 (PubMed: <a href="#">16707441</a> ). Mechanistically, promotes filament depolymerization and increases the amount of soluble myosin-IIA, resulting in the formation of stable protrusions facilitating chemotaxis (By similarity). Also modulates the pro-apoptotic function of TP53 by binding to its C-terminal transactivation domain within the nucleus and reducing its protein levels (PubMed: <a href="#">23752197</a> ). Within the extracellular space, stimulates cytokine

production including granulocyte colony- stimulating factor and CCL24 from T-lymphocytes (By similarity). In addition, stimulates T-lymphocyte chemotaxis by acting as a chemoattractant complex with PGLYRP1 that promotes lymphocyte migration via CCR5 and CXCR3 receptors (PubMed:[26654597](#), PubMed:[30713770](#)).

<b>Cellular Location</b>	Secreted. Nucleus Cytoplasm {ECO:0000250 UniProtKB:P07091}
<b>Tissue Location</b>	Ubiquitously expressed.

## Images

---



Western blot analysis of S100A4 expression in A375 cell lysate.

Image not found : 202311/AP90800-IHC.jpg

Immunohistochemical analysis of paraffin-embedded human colon carcinoma, using S100A4 Antibody.

Image not found : 202311/AP90800-IF.jpg

Immunofluorescent analysis of HeLa cells, using S100A4 Antibody.

Image not found : 202311/AP90800-wb6.jpg

Fibulin-3 has anti-tumorigenic activities in cutaneous squamous cell carcinoma. -Journal of Investigative Dermatology

Please note: All products are 'FOR RESEARCH USE ONLY. NOT FOR USE IN DIAGNOSTIC OR THERAPEUTIC PROCEDURES'.