

# Cytokeratin 1 Antibody

Rabbit mAb

Catalog # AP90814

## Product Information

---

|                          |  |
|--------------------------|--|
| <b>Application</b>       | WB   |
| <b>Primary Accession</b> | <a href="#">P04264</a>   |
| <b>Reactivity</b>        | Rat, Human, Mouse  |
| <b>Clonality</b>         | Monoclonal   |
| <b>Other Names</b>       | 67 kDa cytokeratin; CK1; EHK; Epidermolytic hyperkeratosis 1; EPPK; Hair alpha protein; K1; Keratin; KRT 1; KRT1A; NEPPK; type II cytoskeletal 1; Type-II keratin Kb1; |
| <b>Isotype</b>           | Rabbit IgG   |
| <b>Host</b>              | Rabbit   |
| <b>Calculated MW</b>     | 66039  |

## Additional Information

---

|                                     |   |
|-------------------------------------|---|
| <b>Dilution</b>                     | WB 1:5000~1:20000   |
| <b>Purification</b>                 | Affinity-chromatography   |
| <b>Immunogen</b>                    | A synthesized peptide derived from human Cytokeratin 1  |
| <b>Description</b>                  | May regulate the activity of kinases such as PKC and SRC via binding to integrin beta-1 (ITB1) and the receptor of activated protein C kinase 1 (RACK1).                          |
| <b>Storage Condition and Buffer</b> | Rabbit IgG in phosphate buffered saline , pH 7.4, 150mM NaCl, 0.02% sodium azide and 50% glycerol. Store at +4°C short term. Store at -20°C long term. Avoid freeze / thaw cycle. |

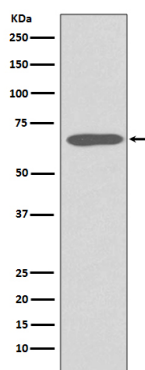
## Protein Information

---

|                          |  |
|--------------------------|--|
| <b>Name</b>              | KRT1   |
| <b>Synonyms</b>          | KRTA   |
| <b>Function</b>          | May regulate the activity of kinases such as PKC and SRC via binding to integrin beta-1 (ITB1) and the receptor of activated protein C kinase 1 (RACK1). In complex with C1QBP is a high affinity receptor for kininogen-1/HMWK. |
| <b>Cellular Location</b> | Cell membrane. Cytoplasm   |
| <b>Tissue Location</b>   | The source of this protein is neonatal foreskin. The 67-kDa type II keratins are expressed in terminally differentiating epidermis   |

## Images

---



Western blot analysis of Cytokeratin 1 expression in Human skin lysate.

Please note: All products are 'FOR RESEARCH USE ONLY. NOT FOR USE IN DIAGNOSTIC OR THERAPEUTIC PROCEDURES'.