

Cyclin E1 Antibody

Rabbit mAb

Catalog # AP90816

Product Information

| | |
|--------------------------|--|
| Application | WB, IF, ICC |
| Primary Accession | P24864 |
| Reactivity | Human |
| Clonality | Monoclonal |
| Other Names | CCNE; Ccne1; cyclin E variant ex5del; cyclin E variant ex7del; Cyclin E1; Cyclin Es; Cyclin Et; G1/S specific cyclin E; G1/S-specific cyclin-E1; |
| Isotype | Rabbit IgG |
| Host | Rabbit |
| Calculated MW | 47077 |

Additional Information

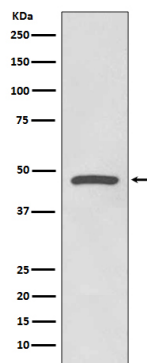
| | |
|-------------------------------------|--|
| Dilution | WB 1:1000~1:2000 ICC/IF 1:50~1:200 |
| Purification | Affinity-chromatography |
| Immunogen | A synthesized peptide derived from human Cyclin E1 |
| Description | Cyclin E1 and cyclin E2 can associate with and activate CDK2. Upon DNA damage, upregulation/activation of the CDK inhibitors p21 Waf1/Cip1 and p27 Kip1 prevent cyclin E/CDK2 activation, resulting in G1/S arrest. Cyclin E1 is phosphorylated at multiple sites in vivo including Thr62, Ser88, Ser72, Thr380 and Ser384, and is controlled by at least two kinases, CDK2 and GSK-3. |
| Storage Condition and Buffer | Rabbit IgG in phosphate buffered saline , pH 7.4, 150mM NaCl, 0.02% sodium azide and 50% glycerol. Store at +4°C short term. Store at -20°C long term. Avoid freeze / thaw cycle. |

Protein Information

| | |
|--------------------------|--|
| Name | CCNE1 |
| Synonyms | CCNE |
| Function | Essential for the control of the cell cycle at the G1/S (start) transition. |
| Cellular Location | Nucleus. |
| Tissue Location | Highly expressed in testis and placenta. Low levels in bronchial epithelial cells. |

Images

Western blot analysis of Cyclin E1 expression in HeLa cell



lysate.

Image not found : 202311/AP90816-IF.jpg

Immunofluorescent analysis of Hela cells, using Cyclin E1 Antibody.

Image not found : 202311/AP90816-wb6.jpg

APC/C is essential for hematopoiesis and impaired in aplastic anemia. -Oncotarget

Please note: All products are 'FOR RESEARCH USE ONLY. NOT FOR USE IN DIAGNOSTIC OR THERAPEUTIC PROCEDURES'.