

Phospho-Cyclin E1 (T77) Antibody

Rabbit mAb

Catalog # AP90817

Product Information

Application	WB, IHC, IF, ICC, IHF
Primary Accession	P24864
Reactivity	Human
Clonality	Monoclonal
Other Names	CCNE; Ccne1; cyclin E variant ex5del; cyclin E variant ex7del; Cyclin E1; Cyclin Es; Cyclin Et; G1/S specific cyclin E; G1/S-specific cyclin-E1;
Isotype	Rabbit IgG
Host	Rabbit
Calculated MW	47077

Additional Information

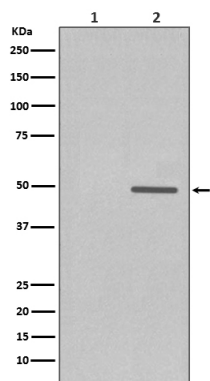
Dilution	WB 1:1000~1:2000 IHC 1:50~1:200 ICC/IF 1:50~1:200
Purification	Affinity-chromatography
Immunogen	A synthesized peptide derived from human Cyclin E1
Description	Cyclin E1 and cyclin E2 can associate with and activate CDK2. Upon DNA damage, upregulation/activation of the CDK inhibitors p21 Waf1/Cip1 and p27 Kip1 prevent cyclin E/CDK2 activation, resulting in G1/S arrest. Cyclin E1 is phosphorylated at multiple sites in vivo including Thr62, Ser88, Ser72, Thr380 and Ser384, and is controlled by at least two kinases, CDK2 and GSK-3.
Storage Condition and Buffer	Rabbit IgG in phosphate buffered saline , pH 7.4, 150mM NaCl, 0.02% sodium azide and 50% glycerol. Store at +4°C short term. Store at -20°C long term. Avoid freeze / thaw cycle.

Protein Information

Name	CCNE1
Synonyms	CCNE
Function	Essential for the control of the cell cycle at the G1/S (start) transition.
Cellular Location	Nucleus.
Tissue Location	Highly expressed in testis and placenta. Low levels in bronchial epithelial cells.

Images

Western blot analysis of Phospho-Cyclin E1 (T77)



expression in (1) JAR cell treated with Lambda Phosphatase lysate; (2) JAR cell lysate.

Please note: All products are 'FOR RESEARCH USE ONLY. NOT FOR USE IN DIAGNOSTIC OR THERAPEUTIC PROCEDURES'.