

Cyclin E2 Antibody

Rabbit mAb

Catalog # AP90822

Product Information

Application	WB, IHC, IF, FC, ICC, IHF
Primary Accession	O96020
Reactivity	Human, Mouse
Clonality	Monoclonal
Other Names	CCN E2; CCNE 2; CCNE2 protein; CYC E2; CYCE 2; CyclinE2; G1/S specific cyclin E2;
Isotype	Rabbit IgG
Host	Rabbit
Calculated MW	46757

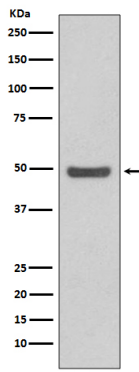
Additional Information

Dilution	WB 1:500~1:1000 IHC 1:50~1:200 ICC/IF 1:100~1:500 FC 1:20
Purification	Affinity-chromatography
Immunogen	A synthesized peptide derived from human Cyclin E2
Description	Cyclin E1 and cyclin E2 can associate with and activate CDK2. Upon DNA damage, upregulation/activation of the CDK inhibitors p21 Waf1/Cip1 and p27 Kip1 prevent cyclin E/CDK2 activation, resulting in G1/S arrest. Essential for the control of the cell cycle at the late G1 and early S phase.
Storage Condition and Buffer	Rabbit IgG in phosphate buffered saline , pH 7.4, 150mM NaCl, 0.02% sodium azide and 50% glycerol. Store at +4°C short term. Store at -20°C long term. Avoid freeze / thaw cycle.

Protein Information

Name	CCNE2
Function	Essential for the control of the cell cycle at the late G1 and early S phase.
Cellular Location	Nucleus.
Tissue Location	According to PubMed:9858585, highest levels of expression in adult testis, thymus and brain. Lower levels in placenta, spleen and colon. Consistently elevated levels in tumor-derived cells compared to non-transformed proliferating cells. According to PubMed:9840927: low levels in thymus, prostate, brain, skeletal muscle, and kidney. Elevated levels in lung. According to PubMed:9840943 highly expressed in testis, placenta, thymus and brain. In a lesser extent in small intestine and colon.

Images



Western blot analysis of Cyclin E2 expression in HeLa cell lysate.

Image not found : 202311/AP90822-IHC.jpg

Immunohistochemical analysis of paraffin-embedded human breast carcinoma, using Cyclin E2 Antibody.

Image not found : 202311/AP90822-IF.jpg

Immunofluorescent analysis of Hela cells, using Cyclin E2 Antibody.

Please note: All products are 'FOR RESEARCH USE ONLY. NOT FOR USE IN DIAGNOSTIC OR THERAPEUTIC PROCEDURES'.