

SOX11 Antibody

Rabbit mAb

Catalog # AP90824

Product Information

Application	WB, IF, ICC, IP
Primary Accession	P35716
Reactivity	Rat, Human, Mouse
Clonality	Monoclonal
Other Names	MRD27; SOX11; SRY (sex determining region Y) box 11; SRY related HMG box gene 11 ; SRY-box 11; Transcription factor SOX-11;
Isotype	Rabbit IgG
Host	Rabbit
Calculated MW	46679

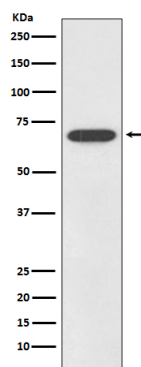
Additional Information

Dilution	WB 1:1000~1:2000 ICC/IF 1:50~1:200 IP 1:50
Purification	Affinity-chromatography
Immunogen	A synthesized peptide derived from human SOX11
Description	Probably important in the developing nervous system. May also have a role in tissue modeling during development.
Storage Condition and Buffer	Rabbit IgG in phosphate buffered saline , pH 7.4, 150mM NaCl, 0.02% sodium azide and 50% glycerol. Store at +4°C short term. Store at -20°C long term. Avoid freeze / thaw cycle.

Protein Information

Name	SOX11
Function	Transcription factor that acts as a transcriptional activator (PubMed: 24886874 , PubMed: 26543203). Binds cooperatively with POU3F2/BRN2 or POU3F1/OCT6 to gene promoters, which enhances transcriptional activation (By similarity). Acts as a transcriptional activator of TEAD2 by binding to its gene promoter and first intron (By similarity). Plays a redundant role with SOX4 and SOX12 in cell survival of developing tissues such as the neural tube, branchial arches and somites, thereby contributing to organogenesis (By similarity).
Cellular Location	Nucleus {ECO:0000255 PROSITE-ProRule:PRU00267, ECO:0000269 PubMed:24886874, ECO:0000269 PubMed:35938035}
Tissue Location	Expressed primarily in the brain and heart, with low expression in the kidney, pancreas and muscle

Images



Western blot analysis of SOX11 expression in SHSY5Y cell lysate.

Please note: All products are 'FOR RESEARCH USE ONLY. NOT FOR USE IN DIAGNOSTIC OR THERAPEUTIC PROCEDURES'.