

# SOX1 Antibody

Rabbit mAb

Catalog # AP90825

## Product Information

<b>Application</b>	WB, IHC, IF, ICC, IHF
<b>Primary Accession</b>	<a href="#">O00570</a>
<b>Reactivity</b>	Human, Mouse
<b>Clonality</b>	Monoclonal
<b>Other Names</b>	Sex determining region Y box 1; sox1; SRY; SRY box containing gene 1; SRY related HMG box gene 1; Transcription factor Sox-1;
<b>Isotype</b>	Rabbit IgG
<b>Host</b>	Rabbit
<b>Calculated MW</b>	39023

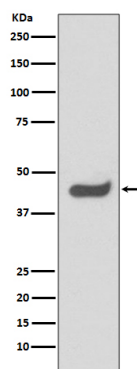
## Additional Information

<b>Dilution</b>	WB 1:1000~1:2000 IHC 1:50~1:200 ICC/IF 1:50~1:200
<b>Purification</b>	Affinity-chromatography
<b>Immunogen</b>	A synthesized peptide derived from human SOX1
<b>Description</b>	Sox (Sry-related box) genes encode a family of transcription factors that play a myriad of roles in developmental processes. Sox1 and Sox2 are the earliest markers that identify neuroectodermal tissue, and these markers, together with Sox9 collectively mark neuronal stem cells (NSC's) that are present in neurogenically active areas of the mature rodent brain. Sox1 is thought to maintain the cell cycle and promote self renewal in NSCs.
<b>Storage Condition and Buffer</b>	Rabbit IgG in phosphate buffered saline , pH 7.4, 150mM NaCl, 0.02% sodium azide and 50% glycerol. Store at +4°C short term. Store at -20°C long term. Avoid freeze / thaw cycle.

## Protein Information

<b>Name</b>	SOX1
<b>Function</b>	Transcriptional activator. May function as a switch in neuronal development. Keeps neural cells undifferentiated by counteracting the activity of proneural proteins and suppresses neuronal differentiation (By similarity).
<b>Cellular Location</b>	Nucleus.
<b>Tissue Location</b>	Mainly expressed in the developing central nervous system

## Images



Western blot analysis of SOX1 expression in HeLa cell lysate.

Please note: All products are 'FOR RESEARCH USE ONLY. NOT FOR USE IN DIAGNOSTIC OR THERAPEUTIC PROCEDURES'.