

SOX10 Antibody

Rabbit mAb

Catalog # AP90826

Product Information

Application	WB, IF, FC, ICC
Primary Accession	P56693
Reactivity	Rat, Human, Mouse
Clonality	Monoclonal
Other Names	SOX10; DOM; Transcription factor SOX-10; WS4; PCWH; WS2E; SRY-related HMG-box gene 10; WS4C;
Isotype	Rabbit IgG
Host	Rabbit
Calculated MW	49911

Additional Information

Dilution	WB 1:1000~1:2000 ICC/IF 1:50~1:200 FC 1:50
Purification	Affinity-chromatography
Immunogen	A synthesized peptide derived from human SOX10
Description	Sox10 is a member of the SOX (SRY-related HMG-box) family of transcription factors involved in the regulation of embryonic development and the determination of cell fate. Sox10 is an important regulator of neural crest and peripheral nervous system development.
Storage Condition and Buffer	Rabbit IgG in phosphate buffered saline , pH 7.4, 150mM NaCl, 0.02% sodium azide and 50% glycerol. Store at +4°C short term. Store at -20°C long term. Avoid freeze / thaw cycle.

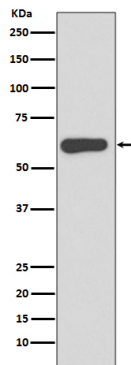
Protein Information

Name	SOX10
Function	Transcription factor that plays a central role in developing and mature glia (By similarity). Specifically activates expression of myelin genes, during oligodendrocyte (OL) maturation, such as DUSP15 and MYRF, thereby playing a central role in oligodendrocyte maturation and CNS myelination (By similarity). Once induced, MYRF cooperates with SOX10 to implement the myelination program (By similarity). Transcriptional activator of MITF, acting synergistically with PAX3 (PubMed: 21965087). Transcriptional activator of MBP, via binding to the gene promoter (By similarity).
Cellular Location	Cytoplasm. Nucleus. Mitochondrion outer membrane {ECO:0000250 UniProtKB:Q04888}; Peripheral membrane protein {ECO:0000250 UniProtKB:Q04888}; Cytoplasmic side {ECO:0000250 UniProtKB:Q04888}

Tissue Location

Expressed in fetal brain and in adult brain, heart, small intestine and colon

Images



Western blot analysis of SOX10 expression in A375 cell lysate.

Image not found : 202311/AP90826-IF.jpg

Immunofluorescent analysis of HT-29 cells, using SOX10 Antibody.

Please note: All products are 'FOR RESEARCH USE ONLY. NOT FOR USE IN DIAGNOSTIC OR THERAPEUTIC PROCEDURES'.