

Cyclin A2 Antibody

Rabbit mAb

Catalog # AP90837

Product Information

Application	WB, IHC, IF, ICC, IHF
Primary Accession	P20248
Reactivity	Rat, Human, Mouse
Clonality	Monoclonal
Other Names	CCN1; CCNA; Ccna2; Cyclin A2; Cyclin-A;
Isotype	Rabbit IgG
Host	Rabbit
Calculated MW	48551

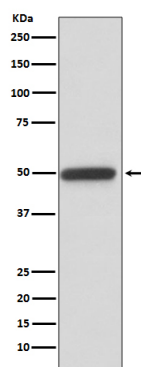
Additional Information

Dilution	WB 1:1000~1:2000 IHC 1:50~1:200 ICC/IF 1:50~1:200
Purification	Affinity-chromatography
Immunogen	A synthesized peptide derived from human Cyclin A2
Description	Cyclin A seems to be required for both S-phase and M-phase. A number of studies have described the ability of over-expressed cyclin A to accelerate the G1 to S transition causing DNA replication, and cyclin A antisense DNA can prevent DNA replication. Cyclin A availability is apparently the rate-limiting step for entry into mitosis, and cyclin A is required for completion of prophase.
Storage Condition and Buffer	Rabbit IgG in phosphate buffered saline , pH 7.4, 150mM NaCl, 0.02% sodium azide and 50% glycerol. Store at +4°C short term. Store at -20°C long term. Avoid freeze / thaw cycle.

Protein Information

Name	CCNA2 (HGNC:1578)
Function	Cyclin which controls both the G1/S and the G2/M transition phases of the cell cycle. Functions through the formation of specific serine/threonine protein kinase holoenzyme complexes with the cyclin- dependent protein kinases CDK1 or CDK2. The cyclin subunit confers the substrate specificity of these complexes and differentially interacts with and activates CDK1 and CDK2 throughout the cell cycle.
Cellular Location	Nucleus. Cytoplasm. Note=Exclusively nuclear during interphase (PubMed:1312467). Detected in the nucleus and the cytoplasm at prophase (PubMed:1312467). Cytoplasmic when associated with SCAPER (PubMed:17698606).

Images



Western blot analysis of Cyclin A2 expression in Jurkat cell lysate.

Please note: All products are 'FOR RESEARCH USE ONLY. NOT FOR USE IN DIAGNOSTIC OR THERAPEUTIC PROCEDURES'.