

STAT5A/B Antibody

Rabbit mAb

Catalog # AP90874

Product Information

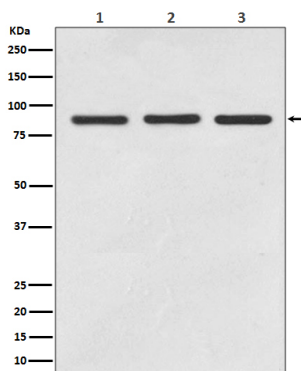
Application	WB, IHC, IF, FC, ICC, IP, IHF
Primary Accession	P42229/P51692
Reactivity	Rat, Human, Mouse
Clonality	Monoclonal
Other Names	Mammary gland factor (STAT5A); Signal transducer and activator of transcription 5A; Stat 5a; STAT 5b; STAT5A; Transcription factor STAT5B;
Isotype	Rabbit IgG
Host	Rabbit
Calculated MW	90 KDa

Additional Information

Dilution	WB 1:1000~1:2000 IHC 1:100~1:500 ICC/IF 1:50~1:200 IP 1:50 FC 1:50
Purification	Affinity-chromatography
Immunogen	A synthesized peptide derived from human STAT5A/B
Description	Carries out a dual function: signal transduction and activation of transcription. Binds to the GAS element and activates PRL-induced transcription.
Storage Condition and Buffer	Rabbit IgG in phosphate buffered saline , pH 7.4, 150mM NaCl, 0.02% sodium azide and 50% glycerol. Store at +4°C short term. Store at -20°C long term. Avoid freeze / thaw cycle.

Protein Information

Images



Western blot analysis of STAT5A/B expression in (1) Jurkat cell lysate; (2) 3T3 cell lysate; (2) PC12 cell lysate.

Image not found : 202311/AP90874-IHC.jpg

Immunohistochemical analysis of paraffin-embedded human breast, using STAT5A/B Antibody.

Please note: All products are 'FOR RESEARCH USE ONLY. NOT FOR USE IN DIAGNOSTIC OR THERAPEUTIC PROCEDURES'.