

MEK3 Antibody

Rabbit mAb

Catalog # AP90876

Product Information

Application	WB, IHC, IF, FC, ICC, IP, IHF
Primary Accession	P46734
Reactivity	Rat, Human, Mouse
Clonality	Monoclonal
Other Names	MEK3; MAP kinase kinase 3; MAPKK3; MAPK/ERK kinase 3;
Isotype	Rabbit IgG
Host	Rabbit
Calculated MW	39318

Additional Information

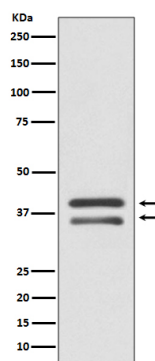
Dilution	WB 1:1000~1:2000 IHC 1:50~1:200 ICC/IF 1:50~1:200 IP 1:50 FC 1:500
Purification	Affinity-chromatography
Immunogen	A synthesized peptide derived from human MEK3
Description	Dual specificity kinase. Is activated by cytokines and environmental stress in vivo. Catalyzes the concomitant phosphorylation of a threonine and a tyrosine residue in the MAP kinase p38.
Storage Condition and Buffer	Rabbit IgG in phosphate buffered saline , pH 7.4, 150mM NaCl, 0.02% sodium azide and 50% glycerol. Store at +4°C short term. Store at -20°C long term. Avoid freeze / thaw cycle.

Protein Information

Name	MAP2K3
Synonyms	MEK3, MKK3, PRKMK3, SKK2
Function	Dual specificity kinase. Is activated by cytokines and environmental stress in vivo. Catalyzes the concomitant phosphorylation of a threonine and a tyrosine residue in the MAP kinase p38. Part of a signaling cascade that begins with the activation of the adrenergic receptor ADRA1B and leads to the activation of MAPK14.
Tissue Location	Abundant expression is seen in the skeletal muscle. It is also widely expressed in other tissues

Images

Western blot analysis of MEK3 expression in HepG2 cell



lysate.

Image not found : 202311/AP90876-IHC.jpg

Immunohistochemical analysis of paraffin-embedded human liver, using MEK3 Antibody.

Please note: All products are 'FOR RESEARCH USE ONLY. NOT FOR USE IN DIAGNOSTIC OR THERAPEUTIC PROCEDURES'.