

# STAT5b Antibody

Rabbit mAb

Catalog # AP90880

## Product Information

---

<b>Application</b>	WB, IHC, IF, ICC, IP, IHF
<b>Primary Accession</b>	<a href="#">P51692</a>
<b>Reactivity</b>	Rat, Human, Mouse
<b>Clonality</b>	Monoclonal
<b>Other Names</b>	Signal transducer and activator of transcription 5B; STA5B; STAT5; Stat5b; Transcription factor STAT5B;
<b>Isotype</b>	Rabbit IgG
<b>Host</b>	Rabbit
<b>Calculated MW</b>	89866

## Additional Information

---

<b>Dilution</b>	WB 1:1000~1:2000 IHC 1:1000~1:2000 ICC/IF 1:1000~1:2000 IP 1:40
<b>Purification</b>	Affinity-chromatography
<b>Immunogen</b>	A synthesized peptide derived from human STAT5b
<b>Description</b>	Stat5 is activated in response to a wide variety of ligands including IL-2, GM-CSF, growth hormone and prolactin. Stat5 is constitutively active in some leukemic cell types. Phosphorylated Stat5 is found in some endothelial cells treated with IL-3, which suggests its involvement in angiogenesis and cell motility. Stat5a and Stat5b are independently regulated and activated in various cell types.
<b>Storage Condition and Buffer</b>	Rabbit IgG in phosphate buffered saline , pH 7.4, 150mM NaCl, 0.02% sodium azide and 50% glycerol. Store at +4°C short term. Store at -20°C long term. Avoid freeze / thaw cycle.

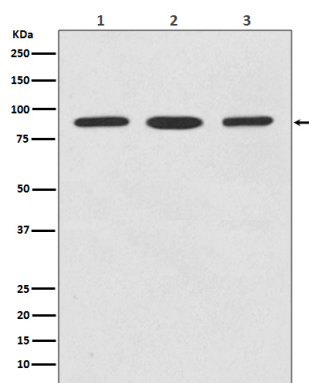
## Protein Information

---

<b>Name</b>	STAT5B
<b>Function</b>	Carries out a dual function: signal transduction and activation of transcription (PubMed: <a href="#">29844444</a> ). Mediates cellular responses to the cytokine KITLG/SCF and other growth factors. Binds to the GAS element and activates PRL-induced transcription. Positively regulates hematopoietic/erythroid differentiation.
<b>Cellular Location</b>	Cytoplasm. Nucleus. Note=Translocated into the nucleus in response to phosphorylation.

## Images

---



Western blot analysis of STAT5b expression in (1) HeLa cell lysate; (2) 3T3 cell lysate; (3) C6 cell lysate.

Image not found : 202311/AP90880-IHC.jpg

Immunohistochemical analysis of paraffin-embedded human breast, using STAT5b Antibody.

Please note: All products are 'FOR RESEARCH USE ONLY. NOT FOR USE IN DIAGNOSTIC OR THERAPEUTIC PROCEDURES'.