

HDAC10 Antibody

Rabbit mAb

Catalog # AP90884

Product Information

Application	WB, IF, ICC, IP
Primary Accession	Q969S8
Reactivity	Human, Mouse
Clonality	Monoclonal
Other Names	HD10; HDAC 10; Hdac10; Histone deacetylase 10; MGC149722;
Isotype	Rabbit IgG
Host	Rabbit
Calculated MW	71445

Additional Information

Dilution	WB 1:1000~1:2000 ICC/IF 1:50~1:200 IP 1:50
Purification	Affinity-chromatography
Immunogen	A synthesized peptide derived from human HDAC10
Description	Responsible for the deacetylation of lysine residues on the N-terminal part of the core histones (H2A, H2B, H3 and H4). Histone deacetylation gives a tag for epigenetic repression and plays an important role in transcriptional regulation, cell cycle progression and developmental events. Histone deacetylases act via the formation of large multiprotein complexes.
Storage Condition and Buffer	Rabbit IgG in phosphate buffered saline , pH 7.4, 150mM NaCl, 0.02% sodium azide and 50% glycerol. Store at +4°C short term. Store at -20°C long term. Avoid freeze / thaw cycle.

Protein Information

Name	HDAC10
Function	Polyamine deacetylase (PDAC), which acts preferentially on N(8)-acetylspermidine, and also on acetylcadaverine and acetylputrescine (PubMed: 28516954). Exhibits attenuated catalytic activity toward N(1),N(8)-diacetylspermidine and very low activity, if any, toward N(1)-acetylspermidine (PubMed: 28516954). Histone deacetylase activity has been observed in vitro (PubMed: 11677242 , PubMed: 11726666 , PubMed: 11739383 , PubMed: 11861901). Has also been shown to be involved in MSH2 deacetylation (PubMed: 26221039). The physiological relevance of protein/histone deacetylase activity is unclear and could be very weak (PubMed: 28516954). May play a role in the promotion of late stages of autophagy, possibly autophagosome- lysosome fusion and/or lysosomal exocytosis in neuroblastoma cells (PubMed: 23801752 , PubMed: 29968769). May play a role in homologous recombination (PubMed: 21247901). May promote DNA mismatch repair (PubMed: 26221039).

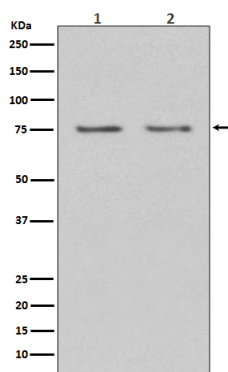
Cellular Location

Cytoplasm. Nucleus Note=Excluded from nucleoli.

Tissue Location

Widely expressed with high levels in liver and kidney.

Images



Western blot analysis of HDAC10 expression in (1) HeLa cell lysate; (2) 3T3 cell lysate.

Image not found : 202311/AP90884-IF.jpg

Immunofluorescent analysis of Hela cells, using HDAC10 Antibody.

Please note: All products are 'FOR RESEARCH USE ONLY. NOT FOR USE IN DIAGNOSTIC OR THERAPEUTIC PROCEDURES'.