

FoxO4 Antibody

Rabbit mAb

Catalog # AP90892

Product Information

Application	WB, IF, FC, ICC, IP
Primary Accession	P98177
Reactivity	Rat, Human, Mouse
Clonality	Monoclonal
Other Names	Forkhead box protein O4; Fork head domain transcription factor AFX1; AFX; AFX1; MLLT7; FOXO4;
Isotype	Rabbit IgG
Host	Rabbit
Calculated MW	53684

Additional Information

Dilution	WB 1:1000~1:2000 ICC/IF 1:50~1:200 IP 1:50 FC 1:100
Purification	Affinity-chromatography
Immunogen	A synthesized peptide derived from human FoxO4
Description	The Forkhead family of transcription factors is involved in tumorigenesis of rhabdomyosarcoma and acute leukemias. Transcription factor involved in the regulation of the insulin signaling pathway. Binds to insulin-response elements (IREs) and can activate transcription of IGFBP1. Down-regulates expression of HIF1A and suppresses hypoxia-induced transcriptional activation of HIF1A-modulated genes. Also involved in negative regulation of the cell cycle.
Storage Condition and Buffer	Rabbit IgG in phosphate buffered saline , pH 7.4, 150mM NaCl, 0.02% sodium azide and 50% glycerol. Store at +4°C short term. Store at -20°C long term. Avoid freeze / thaw cycle.

Protein Information

Name	FOXO4
Synonyms	AFX, AFX1, MLLT7
Function	Transcription factor involved in the regulation of the insulin signaling pathway. Binds to insulin-response elements (IREs) and can activate transcription of IGFBP1. Down-regulates expression of HIF1A and suppresses hypoxia-induced transcriptional activation of HIF1A-modulated genes. Also involved in negative regulation of the cell cycle. Involved in increased proteasome activity in embryonic stem cells (ESCs) by activating expression of PSMD11 in ESCs, leading to enhanced assembly of the 26S proteasome, followed by higher proteasome activity.

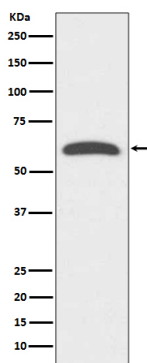
Cellular Location

Cytoplasm. Nucleus. Note=When phosphorylated, translocated from nucleus to cytoplasm. Dephosphorylation triggers nuclear translocation. Monoubiquitination increases nuclear localization. When deubiquitinated, translocated from nucleus to cytoplasm

Tissue Location

Heart, brain, placenta, lung, liver, skeletal muscle, kidney and pancreas. Isoform zeta is most abundant in the liver, kidney, and pancreas

Images



Western blot analysis of FoxO4 expression in human heart lysate.

Image not found : 202311/AP90892-IF.jpg

Immunofluorescent analysis of Hela cells, using FoxO4 Antibody.

Please note: All products are 'FOR RESEARCH USE ONLY. NOT FOR USE IN DIAGNOSTIC OR THERAPEUTIC PROCEDURES'.