

# TRK fused gene Antibody

Rabbit mAb

Catalog # AP90896

## Product Information

<b>Application</b>	WB, IHC, IF, ICC, IP, IHF
<b>Primary Accession</b>	<a href="#">Q92734</a>
<b>Reactivity</b>	Rat, Human, Mouse
<b>Clonality</b>	Monoclonal
<b>Other Names</b>	HMSNP; Protein TFG; SPG57; TF6; TFG; TRK fused; TRK fused gene protein; TRKT3; TRKT3 oncogene;
<b>Isotype</b>	Rabbit IgG
<b>Host</b>	Rabbit
<b>Calculated MW</b>	43448

## Additional Information

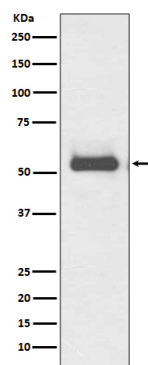
<b>Dilution</b>	WB 1:5000~1:20000 IHC 1:50~1:200 ICC/IF 1:100~1:500 IP 1:50
<b>Purification</b>	Affinity-chromatography
<b>Immunogen</b>	A synthesized peptide derived from human TRK fused gene
<b>Description</b>	Plays a role in the normal dynamic function of the endoplasmic reticulum (ER) and its associated microtubules.
<b>Storage Condition and Buffer</b>	Rabbit IgG in phosphate buffered saline , pH 7.4, 150mM NaCl, 0.02% sodium azide and 50% glycerol. Store at +4°C short term. Store at -20°C long term. Avoid freeze / thaw cycle.

## Protein Information

<b>Name</b>	TFG
<b>Function</b>	Plays a role in the normal dynamic function of the endoplasmic reticulum (ER) and its associated microtubules (PubMed: <a href="#">23479643</a> , PubMed: <a href="#">27813252</a> ). Required for secretory cargo traffic from the endoplasmic reticulum to the Golgi apparatus (PubMed: <a href="#">21478858</a> ).
<b>Cellular Location</b>	Endoplasmic reticulum. Note=Localizes to endoplasmic reticulum exit site (ERES), also known as transitional endoplasmic reticulum (tER) (PubMed:21478858, PubMed:27813252).
<b>Tissue Location</b>	Ubiquitous.

## Images

Western blot analysis of TRK fused gene expression in



HeLa cell lysate.

Please note: All products are 'FOR RESEARCH USE ONLY. NOT FOR USE IN DIAGNOSTIC OR THERAPEUTIC PROCEDURES'.