

PAX2 Antibody

Rabbit mAb

Catalog # AP90905

Product Information

Application	WB, IHC
Primary Accession	Q02962
Reactivity	Human
Clonality	Monoclonal
Other Names	Paired box 2; Paired box gene 2; paired box homeotic gene 2; paired box protein 2; Paired box protein Pax 2; Pax 2;
Isotype	Rabbit IgG
Host	Rabbit
Calculated MW	44706

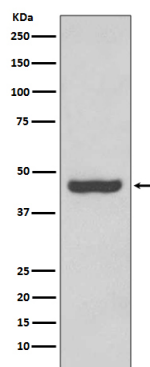
Additional Information

Dilution	WB 1:1000~1:2000 IHC 1:50~1:200
Purification	Affinity-chromatography
Immunogen	A synthesized peptide derived from human PAX2
Description	PAX2 is a transcription factor critically required during the development of the nervous and excretory systems, including the midbrain, hindbrain, spinal cord, eye, ear and urogenital tract. Probable transcription factor that may have a role in kidney cell differentiation. Has a critical role in the development of the urogenital tract, the eyes, and the CNS.
Storage Condition and Buffer	Rabbit IgG in phosphate buffered saline , pH 7.4, 150mM NaCl, 0.02% sodium azide and 50% glycerol. Store at +4°C short term. Store at -20°C long term. Avoid freeze / thaw cycle.

Protein Information

Name	PAX2
Function	Transcription factor that may have a role in kidney cell differentiation (PubMed: 24676634). Has a critical role in the development of the urogenital tract, the eyes, and the CNS.
Cellular Location	Nucleus.
Tissue Location	Expressed in primitive cells of the kidney, ureter, eye, ear and central nervous system

Images



Western blot analysis of PAX2 expression in Human fetal kidney lysate.

Please note: All products are 'FOR RESEARCH USE ONLY. NOT FOR USE IN DIAGNOSTIC OR THERAPEUTIC PROCEDURES'.