

# Phospho-Cdc6 (S54) Antibody

Rabbit mAb

Catalog # AP90926

## Product Information

<b>Application</b>	WB, IF, ICC
<b>Primary Accession</b>	<a href="#">Q99741</a>
<b>Reactivity</b>	Human
<b>Clonality</b>	Monoclonal
<b>Other Names</b>	CDC6; CDC18L; CDC6-related protein; Cdc18-related protein; HsCDC6; HsCDC18; p62(cdc6);
<b>Isotype</b>	Rabbit IgG
<b>Host</b>	Rabbit
<b>Calculated MW</b>	62720

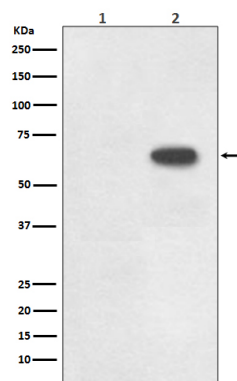
## Additional Information

<b>Dilution</b>	WB 1:500~1:1000 ICC/IF 1:50~1:200
<b>Purification</b>	Affinity-chromatography
<b>Immunogen</b>	A synthesized peptide derived from human Phospho-Cdc6 (S54)
<b>Description</b>	Involved in the initiation of DNA replication. Also participates in checkpoint controls that ensure DNA replication is completed before mitosis is initiated. Cdc6 has recently been shown to play an important role in the intra-S-phase p21 Waf1/Cip1-dependent DNA damage response. Both cdc6 and CDT1 are degraded by the ubiquitin proteasome pathway in response to DNA damage associated with re-replication.
<b>Storage Condition and Buffer</b>	Rabbit IgG in phosphate buffered saline , pH 7.4, 150mM NaCl, 0.02% sodium azide and 50% glycerol. Store at +4°C short term. Store at -20°C long term. Avoid freeze / thaw cycle.

## Protein Information

<b>Name</b>	CDC6
<b>Synonyms</b>	CDC18L
<b>Function</b>	Involved in the initiation of DNA replication. Also participates in checkpoint controls that ensure DNA replication is completed before mitosis is initiated.
<b>Cellular Location</b>	Nucleus. Cytoplasm Note=The protein is nuclear in G1 and cytoplasmic in S-phase cells (PubMed:9566895).

## Images



Western blot analysis of Phospho-Cdc6 (S54) expression in (1) Raji cell lysate; (2) Raji + FBS cell lysate.

Please note: All products are 'FOR RESEARCH USE ONLY. NOT FOR USE IN DIAGNOSTIC OR THERAPEUTIC PROCEDURES'.