

Cdc6 Antibody

Rabbit mAb

Catalog # AP90929

Product Information

Application	WB, IHC, IF, ICC, IHF
Primary Accession	Q99741
Reactivity	Human
Clonality	Monoclonal
Other Names	CDC6; CDC18L; CDC6-related protein; Cdc18-related protein; HsCDC6; HsCDC18; p62(cdc6);
Isotype	Rabbit IgG
Host	Rabbit
Calculated MW	62720

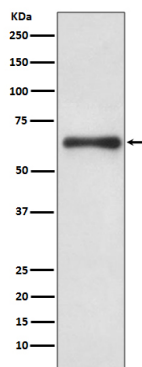
Additional Information

Dilution	WB 1:500~1:2000 IHC 1:50~1:200 ICC/IF 1:50~1:200
Purification	Affinity-chromatography
Immunogen	A synthesized peptide derived from human Cdc6
Description	Involved in the initiation of DNA replication. Also participates in checkpoint controls that ensure DNA replication is completed before mitosis is initiated. Cdc6 has recently been shown to play an important role in the intra-S-phase p21 Waf1/Cip1-dependent DNA damage response. Both cdc6 and CDT1 are degraded by the ubiquitin proteasome pathway in response to DNA damage associated with re-replication.
Storage Condition and Buffer	Rabbit IgG in phosphate buffered saline , pH 7.4, 150mM NaCl, 0.02% sodium azide and 50% glycerol. Store at +4°C short term. Store at -20°C long term. Avoid freeze / thaw cycle.

Protein Information

Name	CDC6
Synonyms	CDC18L
Function	Involved in the initiation of DNA replication. Also participates in checkpoint controls that ensure DNA replication is completed before mitosis is initiated.
Cellular Location	Nucleus. Cytoplasm Note=The protein is nuclear in G1 and cytoplasmic in S-phase cells (PubMed:9566895).

Images



Western blot analysis of Cdc6 expression in HeLa cell lysate treated with hydroxyurea.

Please note: All products are 'FOR RESEARCH USE ONLY. NOT FOR USE IN DIAGNOSTIC OR THERAPEUTIC PROCEDURES'.