

CDC45 Antibody

Rabbit mAb

Catalog # AP90935

Product Information

Application	WB, IHC, IF, FC, ICC, IHF
Primary Accession	O75419
Reactivity	Rat, Human, Mouse
Clonality	Monoclonal
Other Names	CDC45L; CDC45L2; PORC-PI-1; CDC45;
Isotype	Rabbit IgG
Host	Rabbit
Calculated MW	65569

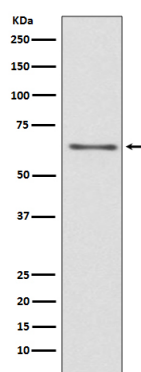
Additional Information

Dilution	WB 1:500~1:2000 IHC 1:50~1:200 ICC/IF 1:50~1:200 FC 1:50
Purification	Affinity-chromatography
Immunogen	A synthesized peptide derived from human CDC45
Description	The protein encoded by this gene was identified by its strong similarity with <i>Saccharomyces cerevisiae</i> Cdc45, an essential protein required to the initiation of DNA replication. Cdc45 is a member of the highly conserved multiprotein complex including Cdc6/Cdc18, the minichromosome maintenance proteins (MCMs) and DNA polymerase, which is important for early steps of DNA replication in eukaryotes.
Storage Condition and Buffer	Rabbit IgG in phosphate buffered saline , pH 7.4, 150mM NaCl, 0.02% sodium azide and 50% glycerol. Store at +4°C short term. Store at -20°C long term. Avoid freeze / thaw cycle.

Protein Information

Name	CDC45 (HGNC:1739)
Synonyms	CDC45L, CDC45L2
Function	Required for initiation of chromosomal DNA replication. Core component of CDC45-MCM-GINS (CMG) helicase, the molecular machine that unwinds template DNA during replication, and around which the replisome is built.
Cellular Location	Nucleus. Chromosome. Note=Associates with chromatin
Tissue Location	Widely expressed, highest levels are found in adult testis and thymus and in fetal liver

Images



Western blot analysis of CDC45 expression in Jurkat cell lysate.

Please note: All products are 'FOR RESEARCH USE ONLY. NOT FOR USE IN DIAGNOSTIC OR THERAPEUTIC PROCEDURES'.