

CDC5 Antibody

Rabbit mAb

Catalog # AP90936

Product Information

Application	WB, IHC, IF, ICC, IHF
Primary Accession	Q99459
Reactivity	Rat, Human, Mouse
Clonality	Monoclonal
Other Names	CDC5; CEF1; PCDC5RP; CDC5-LIKE; dj319D22.1; CDC5L;
Isotype	Rabbit IgG
Host	Rabbit
Calculated MW	92251

Additional Information

Dilution	WB 1:500~1:2000 IHC 1:50~1:200 ICC/IF 1:50~1:200
Purification	Affinity-chromatography
Immunogen	A synthesized peptide derived from human CDC5
Description	The protein encoded by this gene shares a significant similarity with Schizosaccharomyces pombe cdc5 gene product, which is a cell cycle regulator important for G2/M transition. This protein has been demonstrated to act as a positive regulator of cell cycle G2/M progression. It was also found to be an essential component of a non-snRNA spliceosome, which contains at least five additional protein factors and is required for the second catalytic step of pre-mRNA splicing.
Storage Condition and Buffer	Rabbit IgG in phosphate buffered saline , pH 7.4, 150mM NaCl, 0.02% sodium azide and 50% glycerol. Store at +4°C short term. Store at -20°C long term. Avoid freeze / thaw cycle.

Protein Information

Name	CDC5L
Synonyms	KIAA0432, PCDC5RP
Function	DNA-binding protein involved in cell cycle control. May act as a transcription activator. Plays a role in pre-mRNA splicing as core component of precatalytic, catalytic and postcatalytic spliceosomal complexes (PubMed: 11991638 , PubMed: 20176811 , PubMed: 28076346 , PubMed: 28502770 , PubMed: 29301961 , PubMed: 29360106 , PubMed: 29361316 , PubMed: 30705154 , PubMed: 30728453). Component of the PRP19-CDC5L complex that forms an integral part of the spliceosome and is required for activating pre-mRNA splicing. The PRP19-CDC5L complex may also play a role in the response to DNA damage (DDR) (PubMed: 20176811). As a component of the minor spliceosome, involved in the splicing of U12- type introns in

pre-mRNAs (Probable).

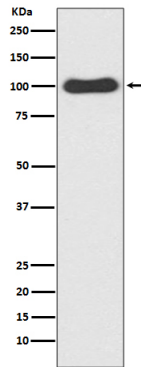
Cellular Location

Nucleus. Nucleus speckle. Cytoplasm Note=May shuttle between cytoplasm and nucleus

Tissue Location

Ubiquitously expressed in both fetal and adult tissues.

Images



Western blot analysis of CDC5 expression in HeLa cell lysate.

Please note: All products are 'FOR RESEARCH USE ONLY. NOT FOR USE IN DIAGNOSTIC OR THERAPEUTIC PROCEDURES'.