

# PPM1H Antibody (Center)

Affinity Purified Rabbit Polyclonal Antibody (Pab)

Catalog # AP9093c

## Product Information

---

<b>Application</b>	WB, IHC-P, FC, E
<b>Primary Accession</b>	<a href="#">Q9ULR3</a>
<b>Reactivity</b>	Human, Rat, Mouse
<b>Host</b>	Rabbit
<b>Clonality</b>	Polyclonal
<b>Isotype</b>	Rabbit IgG
<b>Clone Names</b>	RB21341
<b>Calculated MW</b>	56448
<b>Antigen Region</b>	235-263

## Additional Information

---

<b>Gene ID</b>	57460
<b>Other Names</b>	Protein phosphatase 1H, PPM1H, ARHCL1, KIAA1157, URCC2
<b>Target/Specificity</b>	This PPM1H antibody is generated from rabbits immunized with a KLH conjugated synthetic peptide between 235-263 amino acids from the Central region of human PPM1H.
<b>Dilution</b>	WB~~1:1000 IHC-P~~1:100~500 FC~~1:10~50 E~~Use at an assay dependent concentration.
<b>Format</b>	Purified polyclonal antibody supplied in PBS with 0.09% (W/V) sodium azide. This antibody is purified through a protein A column, followed by peptide affinity purification.
<b>Storage</b>	Maintain refrigerated at 2-8°C for up to 2 weeks. For long term storage store at -20°C in small aliquots to prevent freeze-thaw cycles.
<b>Precautions</b>	PPM1H Antibody (Center) is for research use only and not for use in diagnostic or therapeutic procedures.

## Protein Information

---

<b>Name</b>	PPM1H
<b>Synonyms</b>	ARHCL1, KIAA1157, URCC2
<b>Function</b>	Dephosphorylates CDKN1B at 'Thr-187', thus removing a signal for proteasomal degradation.

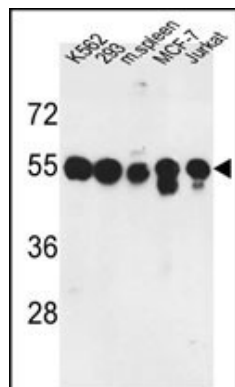
## References

---

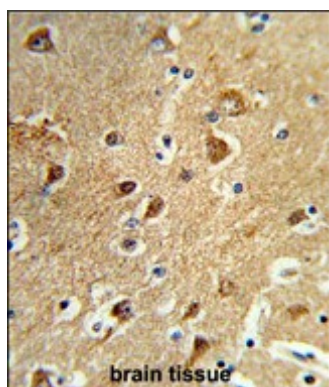
Sugiura,T., et.al., Cancer Biol. Ther. 7 (2), 285-292 (2008)  
Labes,M., et.al., Mol. Cell. Neurosci. 12 (1-2), 29-47 (1998)

## Images

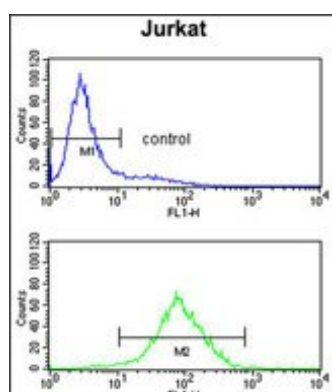
---



Western blot analysis of PPM1H Antibody (Center) (Cat. #AP9093c) in K562, 293, MCF-7, Jurkat cell line and mouse spleen tissue lysates (35ug/lane). PPM1H (arrow) was detected using the purified Pab.



Formalin-fixed and paraffin-embedded human brain tissue reacted with PPM1H Antibody (Center), which was peroxidase-conjugated to the secondary antibody, followed by DAB staining. This data demonstrates the use of this antibody for immunohistochemistry; clinical relevance has not been evaluated.



PPM1H Antibody (Center)(Cat. #AP9093c) flow cytometry analysis of Jurkat cells (bottom histogram) compared to a negative control cell (top histogram). FITC-conjugated goat-anti-rabbit secondary antibodies were used for the analysis.

## Citations

---

- [Effect of PPM1H on malignant phenotype of human pancreatic cancer cells.](#)
- [Analysis of Smad Phosphatase Activity In Vitro.](#)