

CDC42EP1 Antibody

Rabbit mAb

Catalog # AP90940

Product Information

| | |
|--------------------------|-------------------------------|
| Application | WB |
| Primary Accession | Q00587 |
| Reactivity | Human |
| Clonality | Monoclonal |
| Other Names | CDC42EP1; CEP1; MSE55; BORG5; |
| Isotype | Rabbit IgG |
| Host | Rabbit |
| Calculated MW | 40295 |

Additional Information

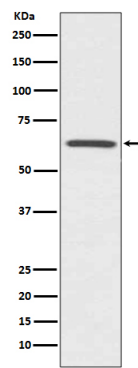
| | |
|-------------------------------------|---|
| Dilution | WB 1:500~1:2000 |
| Purification | Affinity-chromatography |
| Immunogen | A synthesized peptide derived from human CDC42EP1 |
| Description | Probably involved in the organization of the actin cytoskeleton. Induced membrane extensions in fibroblasts. |
| Storage Condition and Buffer | Rabbit IgG in phosphate buffered saline , pH 7.4, 150mM NaCl, 0.02% sodium azide and 50% glycerol. Store at +4°C short term. Store at -20°C long term. Avoid freeze / thaw cycle. |

Protein Information

| | |
|--------------------------|--|
| Name | CDC42EP1 |
| Synonyms | BORG5, CEP1, MSE55 |
| Function | Probably involved in the organization of the actin cytoskeleton. Induced membrane extensions in fibroblasts. |
| Cellular Location | Endomembrane system; Peripheral membrane protein. Cytoplasm, cytoskeleton |
| Tissue Location | Endothelial and bone marrow stromal cells. |

Images

Western blot analysis of CDC42EP1 expression in HUVEC cell lysate.



Please note: All products are 'FOR RESEARCH USE ONLY. NOT FOR USE IN DIAGNOSTIC OR THERAPEUTIC PROCEDURES'.