

CDC40 Antibody

Rabbit mAb

Catalog # AP90945

Product Information

Application	WB, IHC, IF, FC, ICC, IHF
Primary Accession	O60508
Reactivity	Rat, Human, Mouse
Clonality	Monoclonal
Other Names	cell division cycle 40; EH-binding protein 3; EHB3; pre-mRNA splicing factor 17; PRP17; PRPF17; Cdc40;
Isotype	Rabbit IgG
Host	Rabbit
Calculated MW	65521

Additional Information

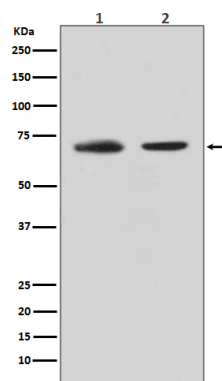
Dilution	WB 1:500~1:2000 IHC 1:50~1:200 ICC/IF 1:50~1:200 FC 1:50
Purification	Affinity-chromatography
Immunogen	A synthesized peptide derived from human CDC40
Description	Associates with the spliceosome late in the splicing pathway and may function in the second step of pre-mRNA splicing.
Storage Condition and Buffer	Rabbit IgG in phosphate buffered saline , pH 7.4, 150mM NaCl, 0.02% sodium azide and 50% glycerol. Store at +4°C short term. Store at -20°C long term. Avoid freeze / thaw cycle.

Protein Information

Name	CDC40
Synonyms	EHB3, PRP17, PRPF17
Function	Required for pre-mRNA splicing as component of the activated spliceosome (PubMed: 33220177). Plays an important role in embryonic brain development; this function does not require proline isomerization (PubMed: 33220177).
Cellular Location	Nucleus. Nucleus speckle

Images

Western blot analysis of CDC40 expression in (1) HeLa cell lysate; (2) K562 cell lysate.



Please note: All products are 'FOR RESEARCH USE ONLY. NOT FOR USE IN DIAGNOSTIC OR THERAPEUTIC PROCEDURES'.