

# Hsp20 Antibody

Rabbit mAb

Catalog # AP90949

## Product Information

<b>Application</b>	WB, IHC, FC
<b>Primary Accession</b>	<a href="#">O14558</a>
<b>Reactivity</b>	Rat, Human, Mouse
<b>Clonality</b>	Monoclonal
<b>Other Names</b>	HSPB6; HEL55; Hsp20; Heat-shock 20 kDa like-protein p20;
<b>Isotype</b>	Rabbit IgG
<b>Host</b>	Rabbit
<b>Calculated MW</b>	17136

## Additional Information

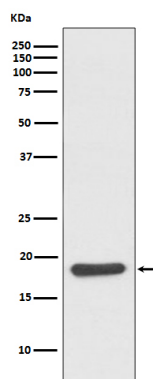
<b>Dilution</b>	WB 1:5000~1:10000 IHC 1:50~1:200 FC 1:50
<b>Purification</b>	Affinity-chromatography
<b>Immunogen</b>	A synthesized peptide derived from human Hsp20
<b>Description</b>	HSP20 a small heat shock protein of the HSP20 family. Note: This description may include information from UniProtKB.
<b>Storage Condition and Buffer</b>	Rabbit IgG in phosphate buffered saline , pH 7.4, 150mM NaCl, 0.02% sodium azide and 50% glycerol. Store at +4°C short term. Store at -20°C long term. Avoid freeze / thaw cycle.

## Protein Information

<b>Name</b>	HSPB6
<b>Function</b>	Small heat shock protein which functions as a molecular chaperone probably maintaining denatured proteins in a folding- competent state. Seems to have versatile functions in various biological processes. Plays a role in regulating muscle function such as smooth muscle vasorelaxation and cardiac myocyte contractility. May regulate myocardial angiogenesis implicating KDR. Overexpression mediates cardioprotection and angiogenesis after induced damage. Stabilizes monomeric YWHAZ thereby supporting YWHAZ chaperone-like activity.
<b>Cellular Location</b>	Cytoplasm. Nucleus. Secreted Note=Translocates to nuclear foci during heat shock

## Images

Western blot analysis of Hsp20 expression in mouse



skeletal muscle lysate.

Please note: All products are 'FOR RESEARCH USE ONLY. NOT FOR USE IN DIAGNOSTIC OR THERAPEUTIC PROCEDURES'.