

Hsp47 Antibody

Rabbit mAb

Catalog # AP90954

Product Information

Application	WB, IHC
Primary Accession	P50454
Reactivity	Rat, Human, Mouse
Clonality	Monoclonal
Other Names	CBP1; CBP2; OI10; gp46; AsTP3; HSP47; PIG14; PPRM; RA-A47; SERPINH2;
Isotype	Rabbit IgG
Host	Rabbit
Calculated MW	46441

Additional Information

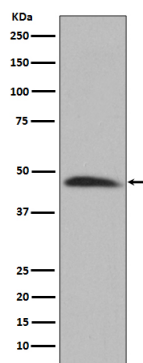
Dilution	WB 1:500~1:1000 IHC 1:50~1:200
Purification	Affinity-chromatography
Immunogen	A synthesized peptide derived from human Hsp47
Description	This gene encodes a member of the serpin superfamily of serine proteinase inhibitors. The encoded protein is localized to the endoplasmic reticulum and plays a role in collagen biosynthesis as a collagen-specific molecular chaperone. Autoantibodies to the encoded protein have been found in patients with rheumatoid arthritis.
Storage Condition and Buffer	Rabbit IgG in phosphate buffered saline , pH 7.4, 150mM NaCl, 0.02% sodium azide and 50% glycerol. Store at +4°C short term. Store at -20°C long term. Avoid freeze / thaw cycle.

Protein Information

Name	SERPINH1
Synonyms	CBP1, CBP2, HSP47, SERPINH2
Function	Binds specifically to collagen. Could be involved as a chaperone in the biosynthetic pathway of collagen.
Cellular Location	Endoplasmic reticulum lumen.

Images

Western blot analysis of Hsp47 expression in HeLa cell lysate.



Please note: All products are 'FOR RESEARCH USE ONLY. NOT FOR USE IN DIAGNOSTIC OR THERAPEUTIC PROCEDURES'.