

A-RAF Antibody

Rabbit mAb

Catalog # AP90956

Product Information

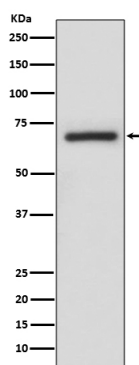
Application	WB, IHC, IF, FC, ICC, IHF
Primary Accession	P10398
Reactivity	Human
Clonality	Monoclonal
Other Names	ARAF; A-raf-1; PKS2; Proto-oncogene A-Raf; Proto-oncogene A-Raf-1; Ras-binding protein DA-Raf; Oncogene ARAF1; ARAF1; RAFA1;
Isotype	Rabbit IgG
Host	Rabbit
Calculated MW	68 KDa

Additional Information

Dilution	WB 1:500~1:2000 IHC 1:50~1:200 ICC/IF 1:50~1:200 FC 1:50
Purification	Affinity-chromatography
Immunogen	A synthesized peptide derived from human A-RAF
Description	Involved in the transduction of mitogenic signals from the cell membrane to the nucleus. May also regulate the TOR signaling cascade.
Storage Condition and Buffer	Rabbit IgG in phosphate buffered saline , pH 7.4, 150mM NaCl, 0.02% sodium azide and 50% glycerol. Store at +4°C short term. Store at -20°C long term. Avoid freeze / thaw cycle.

Protein Information

Images



Western blot analysis of A-RAF expression in A375 cell lysate.

Please note: All products are 'FOR RESEARCH USE ONLY. NOT FOR USE IN DIAGNOSTIC OR THERAPEUTIC PROCEDURES'.