

Phospho-Hsp27 (S78) Antibody

Rabbit mAb

Catalog # AP90958

Product Information

Application	WB, IHC, IF, ICC, IP, IHF
Primary Accession	P04792
Reactivity	Human
Clonality	Monoclonal
Other Names	28 kDa heat shock protein; Estrogen-regulated 24 kDa protein; Growth-related 25 kDa protein; Heat shock 27 kDa protein; HSP 27; HSP25; HSPB1; P25; SRP27; Stress-responsive protein 27;
Isotype	Rabbit IgG
Host	Rabbit
Calculated MW	22783

Additional Information

Dilution	WB 1:500~1:2000 IHC 1:50~1:200 ICC/IF 1:50~1:200 IP 1:50
Purification	Affinity-chromatography
Immunogen	A synthesized peptide derived from human Phospho-Hsp27 (S78)
Description	Heat shock protein (HSP) 27 is one of the small HSPs that are constitutively expressed at different levels in various cell types and tissues. Like other small HSPs, HSP27 is regulated at both the transcriptional and posttranslational levels. In response to stress, the HSP27 expression increases several-fold to confer cellular resistance to the adverse environmental change.
Storage Condition and Buffer	Rabbit IgG in phosphate buffered saline , pH 7.4, 150mM NaCl, 0.02% sodium azide and 50% glycerol. Store at +4°C short term. Store at -20°C long term. Avoid freeze / thaw cycle.

Protein Information

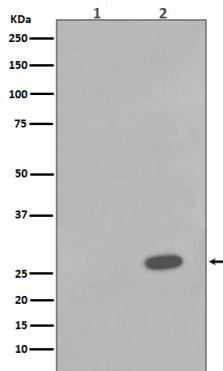
Name	HSPB1
Synonyms	HSP27, HSP28
Function	Small heat shock protein which functions as a molecular chaperone probably maintaining denatured proteins in a folding- competent state (PubMed: 10383393 , PubMed: 20178975). Plays a role in stress resistance and actin organization (PubMed: 19166925). Through its molecular chaperone activity may regulate numerous biological processes including the phosphorylation and the axonal transport of neurofilament proteins (PubMed: 23728742).
Cellular Location	Cytoplasm. Nucleus Cytoplasm, cytoskeleton, spindle Note=Cytoplasmic in interphase cells. Colocalizes with mitotic spindles in mitotic cells. Translocates

to the nucleus during heat shock and resides in sub-nuclear structures known as SC35 speckles or nuclear splicing speckles.

Tissue Location

Detected in all tissues tested: skeletal muscle, heart, aorta, large intestine, small intestine, stomach, esophagus, bladder, adrenal gland, thyroid, pancreas, testis, adipose tissue, kidney, liver, spleen, cerebral cortex, blood serum and cerebrospinal fluid. Highest levels are found in the heart and in tissues composed of striated and smooth muscle.

Images



Western blot analysis of Phospho-Hsp27 (S78) expression in (1) A431 cell lysate; (2) A431 cell lysate treated with Anisomycin.

Please note: All products are 'FOR RESEARCH USE ONLY. NOT FOR USE IN DIAGNOSTIC OR THERAPEUTIC PROCEDURES'.