

PAX8 Antibody

Rabbit mAb

Catalog # AP90970

Product Information

Application	WB, IHC, IF, ICC, IHF
Primary Accession	Q06710
Reactivity	Human
Clonality	Monoclonal
Other Names	Paired box 8; Paired box gene 8; paired box homeotic gene 8; Paired box protein Pax 8; Paired domain gene 8; PAX8;
Isotype	Rabbit IgG
Host	Rabbit
Calculated MW	48218

Additional Information

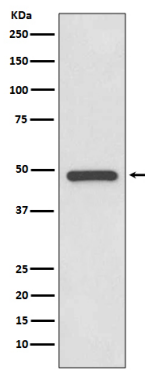
Dilution	WB 1:500~1:2000 IHC 1:50~1:200 ICC/IF 1:50~1:200
Purification	Affinity-chromatography
Immunogen	A synthesized peptide derived from human PAX8
Description	Transcription factor for the thyroid-specific expression of the genes exclusively expressed in the thyroid cell type, maintaining the functional differentiation of such cells.
Storage Condition and Buffer	Rabbit IgG in phosphate buffered saline , pH 7.4, 150mM NaCl, 0.02% sodium azide and 50% glycerol. Store at +4°C short term. Store at -20°C long term. Avoid freeze / thaw cycle.

Protein Information

Name	PAX8
Function	Transcription factor for the thyroid-specific expression of the genes exclusively expressed in the thyroid cell type, maintaining the functional differentiation of such cells.
Cellular Location	Nucleus.
Tissue Location	Expressed in the excretory system, thyroid gland and Wilms tumors

Images

Western blot analysis of PAX8 expression in SK-OV-3 cell lysate.



Please note: All products are 'FOR RESEARCH USE ONLY. NOT FOR USE IN DIAGNOSTIC OR THERAPEUTIC PROCEDURES'.