

# SOD2 Antibody

Rabbit mAb

Catalog # AP90976

## Product Information

---

<b>Application</b>	WB, IHC
<b>Primary Accession</b>	<a href="#">P04179</a>
<b>Reactivity</b>	Rat, Human, Mouse
<b>Clonality</b>	Monoclonal
<b>Other Names</b>	SOD2; IPOB; MNSOD; MVCD6;
<b>Isotype</b>	Rabbit IgG
<b>Host</b>	Rabbit
<b>Calculated MW</b>	24750

## Additional Information

---

<b>Dilution</b>	WB 1:500~1:2000 IHC 1:50~1:200
<b>Purification</b>	Affinity-chromatography
<b>Immunogen</b>	A synthesized peptide derived from human SOD2
<b>Description</b>	SOD-2 is a homotetrameric manganese enzyme (also known as MnSOD) that functions in the mitochondrion. ROS are implicated in a wide range of degenerative processes, including Alzheimer's disease, Parkinson's disease and ischemic heart disease. Homozygous mutant mice, which lack SOD-2, exhibit dilated cardiomyopathy, accumulation of lipid in liver and skeletal muscle, metabolic acidosis, oxidative DNA damage and respiratory chain deficiencies in heart and skeletal muscle.
<b>Storage Condition and Buffer</b>	Rabbit IgG in phosphate buffered saline , pH 7.4, 150mM NaCl, 0.02% sodium azide and 50% glycerol. Store at +4°C short term. Store at -20°C long term. Avoid freeze / thaw cycle.

## Protein Information

---

<b>Name</b>	SOD2
<b>Function</b>	Destroys superoxide anion radicals which are normally produced within the cells and which are toxic to biological systems.
<b>Cellular Location</b>	Mitochondrion matrix.

## Images

---

Western blot analysis of SOD2 expression in Rat brain lysate.

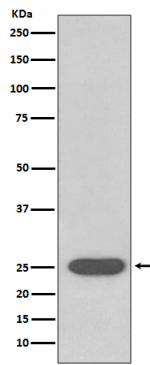


Image not found : 202311/AP90976-wb6.jpg

SOD2 Facilitates the Antiviral Innate Immune Response  
by Scavenging Reactive Oxygen Species. -Viral  
Immunology

Please note: All products are 'FOR RESEARCH USE ONLY. NOT FOR USE IN DIAGNOSTIC OR THERAPEUTIC PROCEDURES'.