

Integrin alpha 5 Antibody

Rabbit mAb

Catalog # AP90978

Product Information

Application	WB, IHC, IF, FC, ICC, IP, IHF
Primary Accession	P08648
Reactivity	Rat, Human, Mouse
Clonality	Monoclonal
Other Names	Integrin alpha-5; VLA-5; CD49e; ITGA5; FNRA;
Isotype	Rabbit IgG
Host	Rabbit
Calculated MW	114536

Additional Information

Dilution	WB 1:1000~1:2000 IHC 1:50~1:200 ICC/IF 1:50~1:200 IP 1:50 FC 1:50
Purification	Affinity-chromatography
Immunogen	A synthesized peptide derived from human Integrin alpha 5
Description	Integrin alpha-5/beta-1 is a receptor for fibronectin and fibrinogen. It recognizes the sequence R-G-D in its ligands. ITGA5:ITGB1 binds to PLA2G2A via a site (site 2) which is distinct from the classical ligand-binding site (site 1) and this induces integrin conformational changes and enhanced ligand binding to site 1. ITGA5:ITGB1 acts as a receptor for fibrillin-1 (FBN1) and mediates R-G-D-dependent cell adhesion to FBN1.
Storage Condition and Buffer	Rabbit IgG in phosphate buffered saline , pH 7.4, 150mM NaCl, 0.02% sodium azide and 50% glycerol. Store at +4°C short term. Store at -20°C long term. Avoid freeze / thaw cycle.

Protein Information

Name	ITGA5 (HGNC:6141)
Synonyms	FNRA
Function	Integrin alpha-5/beta-1 (ITGA5:ITGB1) is a receptor for fibronectin and fibrinogen. It recognizes the sequence R-G-D in its ligands. ITGA5:ITGB1 binds to PLA2G2A via a site (site 2) which is distinct from the classical ligand-binding site (site 1) and this induces integrin conformational changes and enhanced ligand binding to site 1 (PubMed: 18635536 , PubMed: 25398877). ITGA5:ITGB1 acts as a receptor for fibrillin-1 (FBN1) and mediates R-G-D-dependent cell adhesion to FBN1 (PubMed: 12807887 , PubMed: 17158881). ITGA5:ITGB1 acts as a receptor for fibronectin (FN1) and mediates R-G-D-dependent cell adhesion to FN1 (PubMed: 33962943). ITGA5:ITGB1 is a receptor for IL1B and binding is essential for IL1B signaling (PubMed: 29030430). ITGA5:ITGB3 is a receptor for soluble CD40LG and is required for CD40/CD40LG signaling

(PubMed:[31331973](#)).

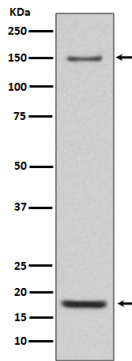
Cellular Location

Cell membrane; Single-pass type I membrane protein. Cell junction, focal adhesion

Tissue Location

Expressed in placenta (at protein level).

Images



Western blot analysis of Integrin alpha 5 expression in Mouse heart lysate.

Image not found : 202311/AP90978-IF.jpg

Immunofluorescent analysis of MCF-7 cells, using Integrin alpha 5 Antibody.

Please note: All products are 'FOR RESEARCH USE ONLY. NOT FOR USE IN DIAGNOSTIC OR THERAPEUTIC PROCEDURES'.