

Estrogen Receptor beta Antibody

Rabbit mAb

Catalog # AP90986

Product Information

Application	WB, IHC
Primary Accession	Q92731
Reactivity	Human
Clonality	Monoclonal
Other Names	ESR2; ESTRB; Estrogen receptor beta; NR3A2;
Isotype	Rabbit IgG
Host	Rabbit
Calculated MW	59216

Additional Information

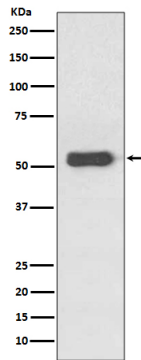
Dilution	WB 1:500~1:2000 IHC 1:50~1:200
Purification	Affinity-chromatography
Immunogen	A synthesized peptide derived from human Estrogen Receptor beta
Description	Nuclear hormone receptor. Binds estrogens with an affinity similar to that of ESR1, and activates expression of reporter genes containing estrogen response elements (ERE) in an estrogen-dependent manner (PubMed:20074560).
Storage Condition and Buffer	Rabbit IgG in phosphate buffered saline , pH 7.4, 150mM NaCl, 0.02% sodium azide and 50% glycerol. Store at +4°C short term. Store at -20°C long term. Avoid freeze / thaw cycle.

Protein Information

Name	ESR2
Synonyms	ESTRB, NR3A2
Function	Nuclear hormone receptor. Binds estrogens with an affinity similar to that of ESR1/ER-alpha, and activates expression of reporter genes containing estrogen response elements (ERE) in an estrogen- dependent manner (PubMed: 20074560).
Cellular Location	Nucleus {ECO:0000255 PROSITE-ProRule:PRU00407, ECO:0000269 PubMed:19126643, ECO:0000269 PubMed:20074560}
Tissue Location	[Isoform 1]: Expressed in testis and ovary, and at a lower level in heart, brain, placenta, liver, skeletal muscle, spleen, thymus, prostate, colon, bone marrow, mammary gland and uterus Also found in uterine bone, breast, and ovarian tumor cell lines, but not in colon and liver tumors. [Isoform 4]: Expressed in the testis. [Isoform 6]: Expressed in testis, placenta, skeletal muscle, spleen

and leukocytes, and at a lower level in heart, lung, liver, kidney, pancreas, thymus, prostate, colon, small intestine, bone marrow, mammary gland and uterus. Not expressed in brain.

Images



Western blot analysis of Estrogen Receptor beta expression in MCF-7 Cell Lysate.

Image not found : 202311/AP90986-IHC.jpg

Immunohistochemical analysis of paraffin-embedded human cervix cancer, using Estrogen Receptor beta Antibody.

Please note: All products are 'FOR RESEARCH USE ONLY. NOT FOR USE IN DIAGNOSTIC OR THERAPEUTIC PROCEDURES'.