

Occludin Antibody

Rabbit mAb

Catalog # AP90995

Product Information

Application	WB, FC, IP
Primary Accession	Q16625
Reactivity	Rat, Human, Mouse
Clonality	Monoclonal
Other Names	OCLN; Occludin; BLCPMG;
Isotype	Rabbit IgG
Host	Rabbit
Calculated MW	59144

Additional Information

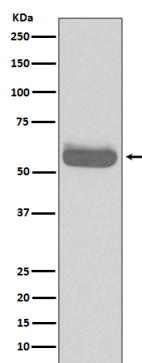
Dilution	WB 1:5000~1:10000 IP 1:20 FC 1:20
Purification	Affinity-chromatography
Immunogen	A synthesized peptide derived from human Occludin
Description	May play a role in the formation and regulation of the tight junction (TJ) paracellular permeability barrier. It is able to induce adhesion when expressed in cells lacking tight junctions.
Storage Condition and Buffer	Rabbit IgG in phosphate buffered saline , pH 7.4, 150mM NaCl, 0.02% sodium azide and 50% glycerol. Store at +4°C short term. Store at -20°C long term. Avoid freeze / thaw cycle.

Protein Information

Name	OCLN
Function	May play a role in the formation and regulation of the tight junction (TJ) paracellular permeability barrier. It is able to induce adhesion when expressed in cells lacking tight junctions.
Cellular Location	Cell membrane; Multi-pass membrane protein. Cell junction, tight junction
Tissue Location	Localized at tight junctions of both epithelial and endothelial cells. Highly expressed in kidney. Not detected in testis

Images

Western blot analysis of Occludin expression in HepG2 cell lysate.



Please note: All products are 'FOR RESEARCH USE ONLY. NOT FOR USE IN DIAGNOSTIC OR THERAPEUTIC PROCEDURES'.