

# COL17A1 Antibody (Center)

Affinity Purified Rabbit Polyclonal Antibody (Pab)

Catalog # AP9099C

## Product Information

<b>Application</b>	IHC-P, WB, FC, E
<b>Primary Accession</b>	<a href="#">Q9UMD9</a>
<b>Reactivity</b>	Human, Mouse
<b>Host</b>	Rabbit
<b>Clonality</b>	Polyclonal
<b>Isotype</b>	Rabbit IgG
<b>Calculated MW</b>	150419
<b>Antigen Region</b>	475-504

## Additional Information

<b>Gene ID</b>	1308
<b>Other Names</b>	Collagen alpha-1(XVII) chain, 180 kDa bullous pemphigoid antigen 2, Bullous pemphigoid antigen 2, 120 kDa linear IgA disease antigen, 120 kDa linear IgA dermatosis antigen, Linear IgA disease antigen 1, LAD-1, 97 kDa linear IgA disease antigen, 97 kDa linear IgA bullous dermatosis antigen, 97 kDa LAD antigen, 97-LAD, Linear IgA bullous disease antigen of 97 kDa, LABD97, COL17A1, BP180, BPAG2
<b>Target/Specificity</b>	This COL17A1 antibody is generated from rabbits immunized with a KLH conjugated synthetic peptide between 475-504 amino acids from the Central region of human COL17A1.
<b>Dilution</b>	IHC-P~~1:100~500 WB~~1:2000 FC~~1:25 E~~Use at an assay dependent concentration.
<b>Format</b>	Purified polyclonal antibody supplied in PBS with 0.09% (W/V) sodium azide. This antibody is purified through a protein A column, followed by peptide affinity purification.
<b>Storage</b>	Maintain refrigerated at 2-8°C for up to 2 weeks. For long term storage store at -20°C in small aliquots to prevent freeze-thaw cycles.
<b>Precautions</b>	COL17A1 Antibody (Center) is for research use only and not for use in diagnostic or therapeutic procedures.

## Protein Information

<b>Name</b>	COL17A1
-------------	---------

<b>Synonyms</b>	BP180, BPAG2
<b>Function</b>	May play a role in the integrity of hemidesmosome and the attachment of basal keratinocytes to the underlying basement membrane.
<b>Cellular Location</b>	Cell junction, hemidesmosome. Membrane; Single- pass type II membrane protein. Note=Localized along the plasma membrane of the hemidesmosome [97 kDa linear IgA disease antigen]; Secreted, extracellular space, extracellular matrix, basement membrane Note=Localized in the lamina lucida beneath the hemidesmosomes
<b>Tissue Location</b>	Detected in skin (PubMed:8618013). In the cornea, it is detected in the epithelial basement membrane, the epithelial cells, and at a lower level in stromal cells (at protein level) (PubMed:25676728). Stratified squamous epithelia. Found in hemidesmosomes. Expressed in cornea, oral mucosa, esophagus, intestine, kidney collecting ducts, ureter, bladder, urethra and thymus but is absent in lung, blood vessels, skeletal muscle and nerves

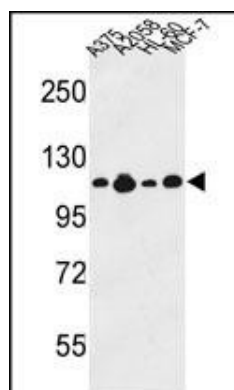
## Background

COL17A1 encodes the alpha chain of type XVII collagen. Unlike most collagens, collagen XVII is a transmembrane protein. Collagen XVII is a structural component of hemidesmosomes, multiprotein complexes at the dermal-epidermal basement membrane zone that mediate adhesion of keratinocytes to the underlying membrane.

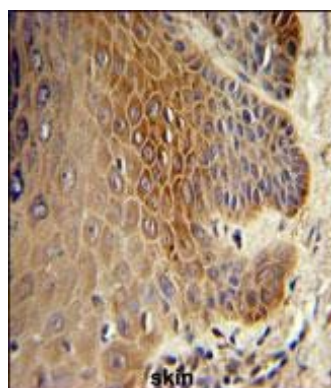
## References

Di Zenzo,G., et.al., J. Invest. Dermatol. 130 (4), 1040-1047 (2010)  
 Ujiie,H., et.al., J. Immunol. 184 (4), 2166-2174 (2010)

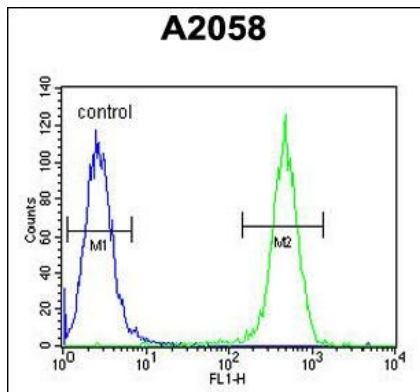
## Images



Western blot analysis of COL17A1 Antibody (Center) (Cat. #AP9099c) in A375, A2058, HL-60, MCF-7 cell line lysates (35ug/lane). COL17A1 (arrow) was detected using the purified Pab.



COL17A1 Antibody (Center) (Cat. #AP9099c) IHC analysis in formalin fixed and paraffin embedded skin tissue followed by peroxidase conjugation of the secondary antibody and DAB staining. This data demonstrates the use of the COL17A1 Antibody (Center) for immunohistochemistry. Clinical relevance has not been evaluated.



COL17A1 Antibody (Center) (Cat. #AP9099c) flow cytometric analysis of A2058 cells (right histogram) compared to a negative control cell (left histogram). FITC-conjugated goat-anti-rabbit secondary antibodies were used for the analysis.

Please note: All products are 'FOR RESEARCH USE ONLY. NOT FOR USE IN DIAGNOSTIC OR THERAPEUTIC PROCEDURES'.