

Phospho-Nrf2 (S40) Antibody

Rabbit mAb

Catalog # AP91005

Product Information

Application	WB, IHC, IF, FC, ICC, IP, IHF
Primary Accession	Q16236
Reactivity	Human
Clonality	Monoclonal
Other Names	E4TF1-60; E4TF1A; NFT2; NRF2; NRF2A;
Isotype	Rabbit IgG
Host	Rabbit
Calculated MW	67827

Additional Information

Dilution	WB 1:1000~1:2000 IHC 1:50~1:200 ICC/IF 1:50~1:200 IP 1:50 FC 1:50
Purification	Affinity-chromatography
Immunogen	A synthesized peptide derived from human Phospho-Nrf2 (S40)
Description	Transcription activator that binds to antioxidant response (ARE) elements in the promoter regions of target genes. Important for the coordinated up-regulation of genes in response to oxidative stress. May be involved in the transcriptional activation of genes of the beta-globin cluster by mediating enhancer activity of hypersensitive site 2 of the beta-globin locus control region.
Storage Condition and Buffer	Rabbit IgG in phosphate buffered saline , pH 7.4, 150mM NaCl, 0.02% sodium azide and 50% glycerol. Store at +4°C short term. Store at -20°C long term. Avoid freeze / thaw cycle.

Protein Information

Name	NFE2L2 {ECO:0000303 PubMed:29018201, ECO:0000312 HGNC:HGNC:7782}
Function	Transcription factor that plays a key role in the response to oxidative stress: binds to antioxidant response (ARE) elements present in the promoter region of many cytoprotective genes, such as phase 2 detoxifying enzymes, and promotes their expression, thereby neutralizing reactive electrophiles (PubMed: 11035812 , PubMed: 19489739 , PubMed: 29018201 , PubMed: 31398338). In normal conditions, ubiquitinated and degraded in the cytoplasm by the BCR(KEAP1) complex (PubMed: 11035812 , PubMed: 15601839 , PubMed: 29018201). In response to oxidative stress, electrophile metabolites inhibit activity of the BCR(KEAP1) complex, promoting nuclear accumulation of NFE2L2/NRF2, heterodimerization with one of the small Maf proteins and binding to ARE elements of cytoprotective target genes (PubMed: 19489739 , PubMed: 29590092). The NFE2L2/NRF2 pathway is also activated in response to selective autophagy: autophagy

promotes interaction between KEAP1 and SQSTM1/p62 and subsequent inactivation of the BCR(KEAP1) complex, leading to NFE2L2/NRF2 nuclear accumulation and expression of cytoprotective genes (PubMed:[20452972](#)). The NFE2L2/NRF2 pathway is also activated during the unfolded protein response (UPR), contributing to redox homeostasis and cell survival following endoplasmic reticulum stress (By similarity). May also be involved in the transcriptional activation of genes of the beta-globin cluster by mediating enhancer activity of hypersensitive site 2 of the beta-globin locus control region (PubMed:[7937919](#)). Also plays an important role in the regulation of the innate immune response and antiviral cytosolic DNA sensing. It is a critical regulator of the innate immune response and survival during sepsis by maintaining redox homeostasis and restraint of the dysregulation of pro-inflammatory signaling pathways like MyD88- dependent and -independent and TNF-alpha signaling (By similarity). Suppresses macrophage inflammatory response by blocking pro- inflammatory cytokine transcription and the induction of IL6 (By similarity). Binds to the proximity of pro-inflammatory genes in macrophages and inhibits RNA Pol II recruitment. The inhibition is independent of the NRF2-binding motif and reactive oxygen species level (By similarity). Represses antiviral cytosolic DNA sensing by suppressing the expression of the adapter protein STING1 and decreasing responsiveness to STING1 agonists while increasing susceptibility to infection with DNA viruses (PubMed:[30158636](#)). Once activated, limits the release of pro-inflammatory cytokines in response to human coronavirus SARS-CoV-2 infection and to virus-derived ligands through a mechanism that involves inhibition of IRF3 dimerization. Also inhibits both SARS-CoV-2 replication, as well as the replication of several other pathogenic viruses including Herpes Simplex Virus-1 and-2, Vaccinia virus, and Zika virus through a type I interferon (IFN)- independent mechanism (PubMed:[33009401](#)).

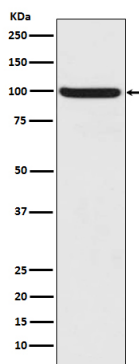
Cellular Location

Cytoplasm, cytosol. Nucleus {ECO:0000255 | PROSITE-ProRule:PRU00978, ECO:0000269 | PubMed:11035812, ECO:0000269 | PubMed:15601839, ECO:0000269 | PubMed:21196497, ECO:0000269 | PubMed:29983246}. Note=Cytosolic under unstressed conditions: ubiquitinated and degraded by the BCR(KEAP1) E3 ubiquitin ligase complex (PubMed:15601839, PubMed:21196497). Translocates into the nucleus upon induction by electrophilic agents that inactivate the BCR(KEAP1) E3 ubiquitin ligase complex (PubMed:21196497)

Tissue Location

Widely expressed. Highest expression in adult muscle, kidney, lung, liver and in fetal muscle

Images



Western blot analysis of Nrf2 phosphorylation expression in HepG2 cell lysate.

Image not found : 202311/AP91005-IHC.jpg

Immunohistochemical analysis of paraffin-embedded human breast carcinoma, using Phospho-Nrf2 (S40)

Antibody.

Image not found : 202311/AP91005-IF.jpg

Immunofluorescent analysis of HepG2 cells, using Phospho-Nrf2 (S40) Antibody.

Image not found : 202311/AP91005-wb6.jpg

Erjingwan Extracts Exert Antiaging Effects of Skin through Activating Nrf2 and Inhibiting NF-B. -Evidence-based Complementary and Alternative Medicine

Please note: All products are 'FOR RESEARCH USE ONLY. NOT FOR USE IN DIAGNOSTIC OR THERAPEUTIC PROCEDURES'.