

E2F1 Antibody

Rabbit mAb

Catalog # AP91011

Product Information

Application	WB, IHC, IF, FC, ICC, IP, IHF
Primary Accession	Q01094
Reactivity	Rat, Human, Mouse
Clonality	Monoclonal
Other Names	E2F-1; PBR3; PRB-binding protein E2F-1; RBAP-1; RBBP-3; RBBP3;
Isotype	Rabbit IgG
Host	Rabbit
Calculated MW	46920

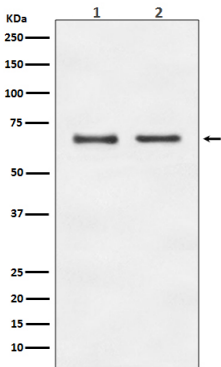
Additional Information

Dilution	WB 1:500~1:2000 IHC 1:50~1:200 ICC/IF 1:50~1:200 IP 1:50 FC 1:50
Purification	Affinity-chromatography
Immunogen	A synthesized peptide derived from human E2F1
Description	The protein encoded by this gene is a member of the E2F family of transcription factors. The E2F family plays a crucial role in the control of cell cycle and action of tumor suppressor proteins and is also a target of the transforming proteins of small DNA tumor viruses.
Storage Condition and Buffer	Rabbit IgG in phosphate buffered saline , pH 7.4, 150mM NaCl, 0.02% sodium azide and 50% glycerol. Store at +4°C short term. Store at -20°C long term. Avoid freeze / thaw cycle.

Protein Information

Name	E2F1 {ECO:0000303 PubMed:8964493, ECO:0000312 HGNC:HGNC:3113}
Function	Transcription activator that binds DNA cooperatively with DP proteins through the E2 recognition site, 5'-TTTC[CG]CGC-3' found in the promoter region of a number of genes whose products are involved in cell cycle regulation or in DNA replication (PubMed: 10675335 , PubMed: 12717439 , PubMed: 17050006 , PubMed: 17704056 , PubMed: 18625225 , PubMed: 28992046). The DRTF1/E2F complex functions in the control of cell-cycle progression from G1 to S phase (PubMed: 10675335 , PubMed: 12717439 , PubMed: 17704056). E2F1 binds preferentially RB1 in a cell-cycle dependent manner (PubMed: 10675335 , PubMed: 12717439 , PubMed: 17704056). It can mediate both cell proliferation and TP53/p53-dependent apoptosis (PubMed: 8170954). Blocks adipocyte differentiation by binding to specific promoters repressing CEBPA binding to its target gene promoters (PubMed: 20176812). Directly activates transcription of PEG10 (PubMed: 17050006 , PubMed: 18625225 , PubMed: 28992046). Positively regulates transcription of RRP1B (PubMed: 20040599).

Images



Western blot analysis of E2F1 expression in (1) HeLa cell lysate; (2) NIH/3T3 cell lysate.

- Image not found : 202311/AP91011-IHC.jpg

Immunohistochemical analysis of paraffin-embedded human ovary carcinoma, using E2F1 Antibody.
- Image not found : 202311/AP91011-IF.jpg

Immunofluorescent analysis of HeLa cells, using E2F1 Antibody.
- Image not found : 202311/AP91011-wb6.jpg

The SOX4/miR-17-92/RB1 Axis Promotes Prostate Cancer Progression. -Neoplasia

Please note: All products are 'FOR RESEARCH USE ONLY. NOT FOR USE IN DIAGNOSTIC OR THERAPEUTIC PROCEDURES'.