

RIP Antibody

Rabbit mAb

Catalog # AP91013

Product Information

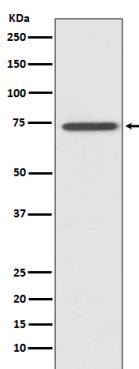
Application	WB, FC
Primary Accession	Q13546
Reactivity	Human
Clonality	Monoclonal
Other Names	RIPK1; Cell death protein RIP; RIP1; RIP; RIP-1; Rinp;
Isotype	Rabbit IgG
Host	Rabbit
Calculated MW	75 KDa

Additional Information

Dilution	WB 1:500~1:2000 FC 1:20
Purification	Affinity-chromatography
Immunogen	A synthesized peptide derived from human RIP
Description	Essential adapter molecule for the activation of NF-kappa-B. Following different upstream signals (binding of inflammatory cytokines, stimulation of pathogen recognition receptors, or DNA damage), particular RIPK1-containing complexes are formed, initiating a limited number of cellular responses.
Storage Condition and Buffer	Rabbit IgG in phosphate buffered saline , pH 7.4, 150mM NaCl, 0.02% sodium azide and 50% glycerol. Store at +4°C short term. Store at -20°C long term. Avoid freeze / thaw cycle.

Protein Information

Images



Western blot analysis of RIP expression in HeLa cell lysate.

Please note: All products are 'FOR RESEARCH USE ONLY. NOT FOR USE IN DIAGNOSTIC OR THERAPEUTIC PROCEDURES'.