

Bmi1 Antibody

Rabbit mAb

Catalog # AP91022

Product Information

Application	WB, IHC, IF, ICC, IHF
Primary Accession	P35226
Reactivity	Rat, Human
Clonality	Monoclonal
Other Names	BMI1 ; Polycomb complex protein BMI 1; RING finger protein 51; RNF51; PCGF4;
Isotype	Rabbit IgG
Host	Rabbit
Calculated MW	36949

Additional Information

Dilution	WB 1:500~1:2000 IHC 1:50~1:200 ICC/IF 1:50~1:200
Purification	Affinity-chromatography
Immunogen	A synthesized peptide derived from human Bmi1
Description	The polycomb group (PcG) of proteins contributes to the maintenance of cell identity, stem cell self-renewal, cell cycle regulation, and oncogenesis by maintaining the silenced state of genes that promote cell lineage specification, cell death, and cell-cycle arrest. PcG proteins exist in two complexes that cooperate to maintain long-term gene silencing through epigenetic chromatin modifications. The first complex, EED-EZH2, is recruited to genes by DNA-binding transcription factors and methylates histone H3 on Lys27.
Storage Condition and Buffer	Rabbit IgG in phosphate buffered saline , pH 7.4, 150mM NaCl, 0.02% sodium azide and 50% glycerol. Store at +4°C short term. Store at -20°C long term. Avoid freeze / thaw cycle.

Protein Information

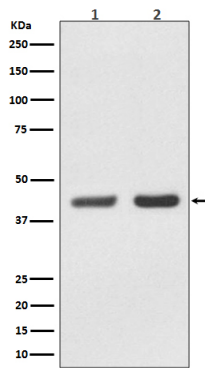
Name	BMI1
Synonyms	PCGF4, RNF51
Function	Component of a Polycomb group (PcG) multiprotein PRC1-like complex, a complex class required to maintain the transcriptionally repressive state of many genes, including Hox genes, throughout development. PcG PRC1 complex acts via chromatin remodeling and modification of histones; it mediates monoubiquitination of histone H2A 'Lys-119', rendering chromatin heritably changed in its expressibility (PubMed: 15386022 , PubMed: 16359901 , PubMed: 16714294 , PubMed: 21772249 , PubMed: 25355358 , PubMed: 26151332 , PubMed: 27827373). The complex composed of RNF2,

UB2D3 and BMI1 binds nucleosomes, and has activity only with nucleosomal histone H2A (PubMed:[21772249](#), PubMed:[25355358](#)). In the PRC1-like complex, regulates the E3 ubiquitin-protein ligase activity of RNF2/RING2 (PubMed:[15386022](#), PubMed:[21772249](#), PubMed:[26151332](#)).

Cellular Location

Nucleus. Cytoplasm

Images



Western blot analysis of Bmi1 expression in (1) K562 cell lysate; (2) PC-12 cell lysate.

Please note: All products are 'FOR RESEARCH USE ONLY. NOT FOR USE IN DIAGNOSTIC OR THERAPEUTIC PROCEDURES'.