

VWF Antibody

Rabbit mAb

Catalog # AP91023

Product Information

Application	WB, IHC
Primary Accession	P04275
Reactivity	Human
Clonality	Monoclonal
Other Names	VWF; von Willebrand factor; von Willebrand antigen II; F8VWF;
Isotype	Rabbit IgG
Host	Rabbit
Calculated MW	309265

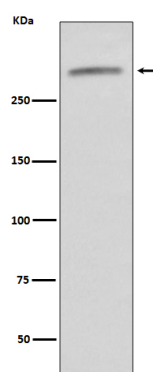
Additional Information

Dilution	WB 1:500~1:2000 IHC 1:50~1:200
Purification	Affinity-chromatography
Immunogen	A synthesized peptide derived from human VWF
Description	VWF is important in hemostasis, and genetic defects in the structure and modification of VWF can cause von Willebrand disease (VWD), the most common congenital bleeding disorder in humans.
Storage Condition and Buffer	Rabbit IgG in phosphate buffered saline , pH 7.4, 150mM NaCl, 0.02% sodium azide and 50% glycerol. Store at +4°C short term. Store at -20°C long term. Avoid freeze / thaw cycle.

Protein Information

Name	VWF
Synonyms	F8VWF
Function	Important in the maintenance of hemostasis, it promotes adhesion of platelets to the sites of vascular injury by forming a molecular bridge between sub-endothelial collagen matrix and platelet- surface receptor complex GPIb-IX-V. Also acts as a chaperone for coagulation factor VIII, delivering it to the site of injury, stabilizing its heterodimeric structure and protecting it from premature clearance from plasma.
Cellular Location	Secreted. Secreted, extracellular space, extracellular matrix. Note=Localized to storage granules
Tissue Location	Plasma.

Images



Western blot analysis of VWF expression in human serum lysate.

Please note: All products are 'FOR RESEARCH USE ONLY. NOT FOR USE IN DIAGNOSTIC OR THERAPEUTIC PROCEDURES'.