

LAMP1 Antibody

Rabbit mAb

Catalog # AP91029

Product Information

| | |
|--------------------------|--|
| Application | WB, IHC |
| Primary Accession | P11279 |
| Reactivity | Human |
| Clonality | Monoclonal |
| Other Names | LAMP-1; CD107 antigen-like family member A; CD107a; LAMP1; |
| Isotype | Rabbit IgG |
| Host | Rabbit |
| Calculated MW | 44882 |

Additional Information

| | |
|-------------------------------------|---|
| Dilution | WB 1:500~1:2000 IHC 1:50~1:200 |
| Purification | Affinity-chromatography |
| Immunogen | A synthesized peptide derived from human LAMP1 |
| Description | LAMP1 and LAMP2 (lysosome-associated membrane protein 1 and 2) are two abundant lysosomal membrane proteins. Both are transmembrane proteins and heavily glycosylated at the amino-terminal luminal side of the lysosomal inner leaflet, which protects the proteins from proteolysis. The carboxy terminus of LAMP1 is exposed to the cytoplasm and contains a tyrosine sorting motif which targets LAMP to lysosomal membranes. |
| Storage Condition and Buffer | Rabbit IgG in phosphate buffered saline , pH 7.4, 150mM NaCl, 0.02% sodium azide and 50% glycerol. Store at +4°C short term. Store at -20°C long term. Avoid freeze / thaw cycle. |

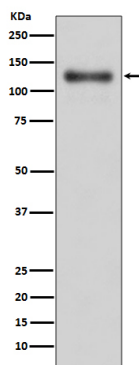
Protein Information

| | |
|-----------------|--|
| Name | LAMP1 {ECO:0000303 PubMed:23632890, ECO:0000312 HGNC:HGNC:6499} |
| Function | Lysosomal membrane glycoprotein which plays an important role in lysosome biogenesis, lysosomal pH regulation, autophagy and cholesterol homeostasis (PubMed: 37390818). Acts as an important regulator of lysosomal lumen pH regulation by acting as a direct inhibitor of the proton channel TMEM175, facilitating lysosomal acidification for optimal hydrolase activity (PubMed: 37390818). Also plays an important role in NK-cells cytotoxicity (PubMed: 2022921 , PubMed: 23632890). Mechanistically, participates in cytotoxic granule movement to the cell surface and perforin trafficking to the lytic granule (PubMed: 23632890). In addition, protects NK-cells from degranulation-associated damage induced by their own cytotoxic granule content (PubMed: 23847195). Presents carbohydrate ligands to selectins (PubMed: 7685349). |

Cellular Location

Lysosome membrane; Single-pass type I membrane protein. Endosome membrane; Single-pass type I membrane protein. Late endosome membrane; Single-pass type I membrane protein. Cell membrane; Single-pass type I membrane protein. Cytolytic granule membrane; Single-pass type I membrane protein. Note=This protein shuttles between lysosomes, endosomes, and the plasma membrane (By similarity). Colocalizes with OSBPL1A at the late endosome (PubMed:16176980). {ECO:0000250|UniProtKB:P05300, ECO:0000269|PubMed:16176980, ECO:0000269|PubMed:17897319}

Images



Western blot analysis of LAMP1 expression in A431 cell lysate.

Please note: All products are 'FOR RESEARCH USE ONLY. NOT FOR USE IN DIAGNOSTIC OR THERAPEUTIC PROCEDURES'.