

MRC1 Antibody

Rabbit mAb

Catalog # AP91044

Product Information

Application	WB, IF, ICC
Primary Accession	P22897
Reactivity	Human
Clonality	Monoclonal
Other Names	Macrophage mannose receptor 1; MMR; CD206 antigen; MRC1; Mannose receptor C type 1; MRC1; CD206; CLEC13D; CLEC13DL; MRC1L1;
Isotype	Rabbit IgG
Host	Rabbit
Calculated MW	166012

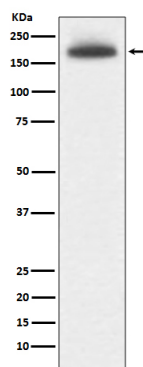
Additional Information

Dilution	WB 1:500~1:2000 ICC/IF 1:50~1:200
Purification	Affinity-chromatography
Immunogen	A synthesized peptide derived from human MRC1
Description	Mediates the endocytosis of glycoproteins by macrophages. Binds both sulfated and non-sulfated polysaccharide chains.(Microbial infection) Acts as phagocytic receptor for bacteria, fungi and other pathogens. Acts as a receptor for Dengue virus envelope protein E (PubMed:18266465). Interacts with hepatitis B virus envelope protein (PubMed:19683778).
Storage Condition and Buffer	Rabbit IgG in phosphate buffered saline , pH 7.4, 150mM NaCl, 0.02% sodium azide and 50% glycerol. Store at +4°C short term. Store at -20°C long term. Avoid freeze / thaw cycle.

Protein Information

Name	MRC1
Synonyms	CLEC13D, CLEC13DL, MRC1L1
Function	Mediates the endocytosis of glycoproteins by macrophages. Binds both sulfated and non-sulfated polysaccharide chains. (Microbial infection) Acts as a receptor for Dengue virus envelope protein E.
Cellular Location	Endosome membrane; Single-pass type I membrane protein. Cell membrane; Single-pass type I membrane protein

Images



Western blot analysis of MRC1 expression in 293T cell lysate.

Please note: All products are 'FOR RESEARCH USE ONLY. NOT FOR USE IN DIAGNOSTIC OR THERAPEUTIC PROCEDURES'.